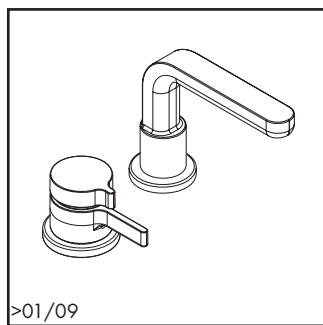


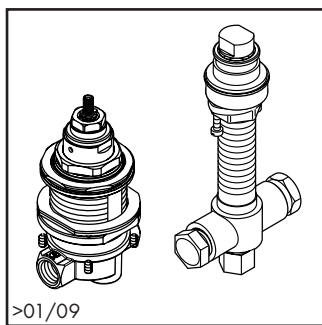
Metris® S

2 hole thermostatic tub filler / Robinet bain thermostatique / Mezclador termostatico para baño



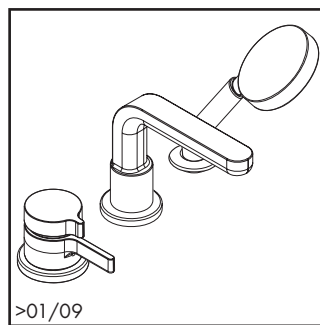
>01/09

04135xx0



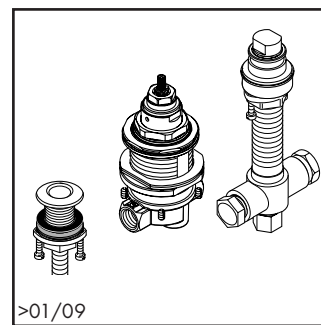
>01/09

04125181



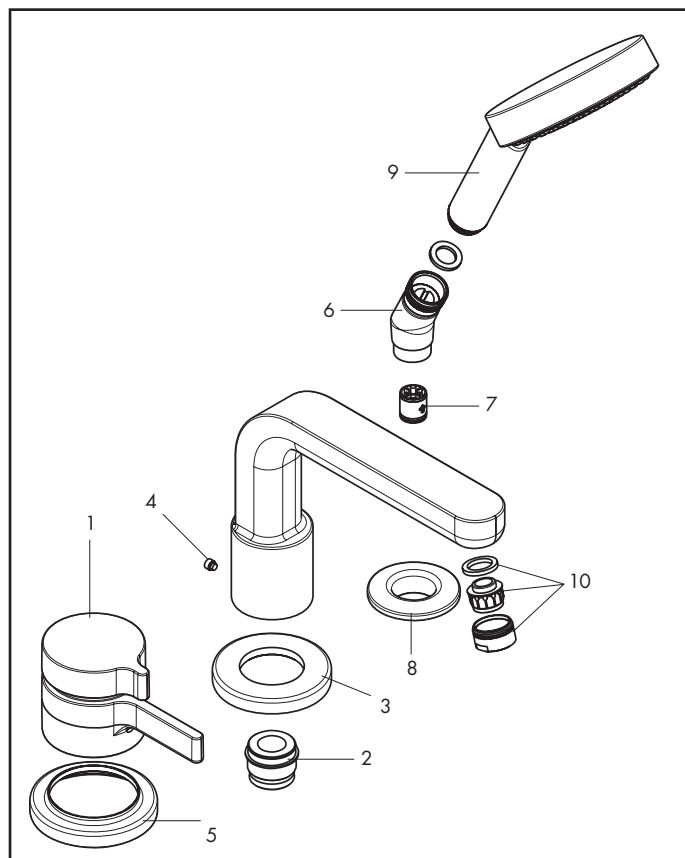
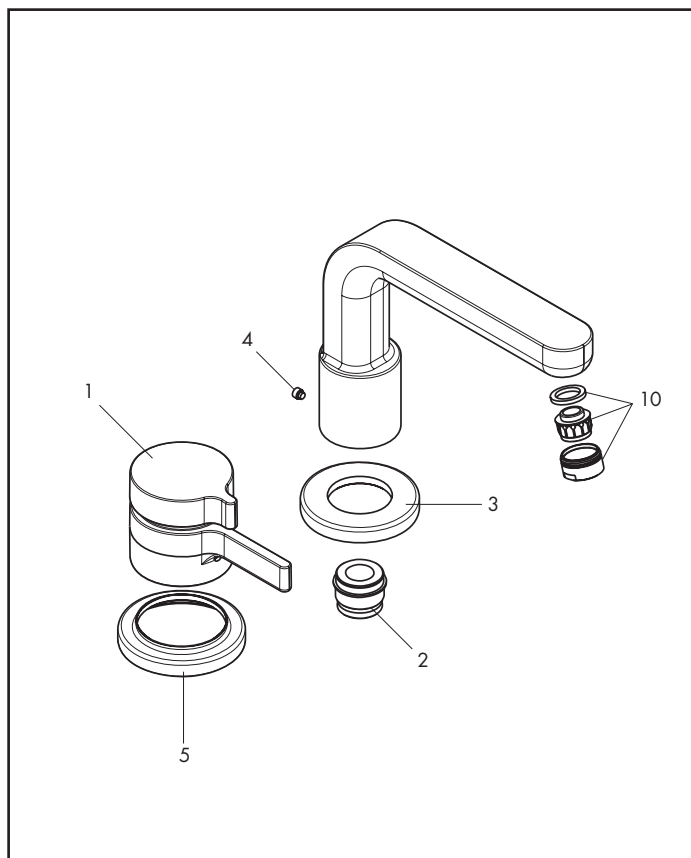
>01/09

04126xx1



>01/09

04124181

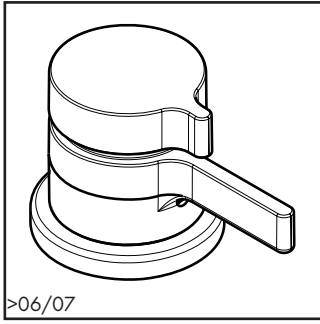


| Pos. | Description | Description | Denominación | No./Nr./N° | PG |
|------|------------------------|--------------------------------|--------------------------------|------------|-------|
| 1 | handle | poignée | mando | 88713xx0 | 1 12* |
| 2 | spout sealing ring | joint | junta | 88512000 | 1 8 |
| 3 | escutcheon | rosace | florón | 97779xx0 | 1 99 |
| 4 | screw | vis | tornillo | 96029000 | 1 3 |
| 5 | escutcheon | rosace | florón | 88734xx0 | 1 99 |
| 6 | elbow | coude de raccordement flexible | rácor conexión flexo | 28071xx0 | 1 9 |
| 7 | check valve (2 pieces) | clapet anti-retour (2 pièces) | válvula antirretorno (2 pieza) | 94074000 | set 3 |
| 8 | flange | rosace | florón | 97159xx0 | 1 10 |
| 9 | handshower | douchette | teleducha | 28504xx1 | 1 98 |
| 10 | aerator | aérateur | aireador | 13914xx0 | 1 4* |
| | rough, see p. 9.22 | set de base, voir p. 9.22 | cuerpo base, ver página 9.22 | 04125181 | |
| | rough, see p. 9.22 | set de base, voir p. 9.22 | cuerpo base, ver página 9.22 | 04124181 | |

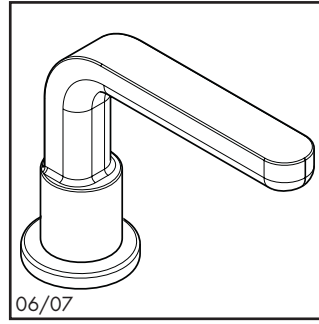
9.2 9/2010 xx = Please see page 9.1 for finish codes / *PG is for Chrome only. See the index for other finishes.
 xx = Description des codes couleur page 9.1 / *PG concerne Chromé seulement. Pour les autres, voir dans la liste des références.
 xx = Para el código de acabados ver página 9.1 / *La PG vale para Cromado solo. Ver el índice para las otras superficies.

Metris® S

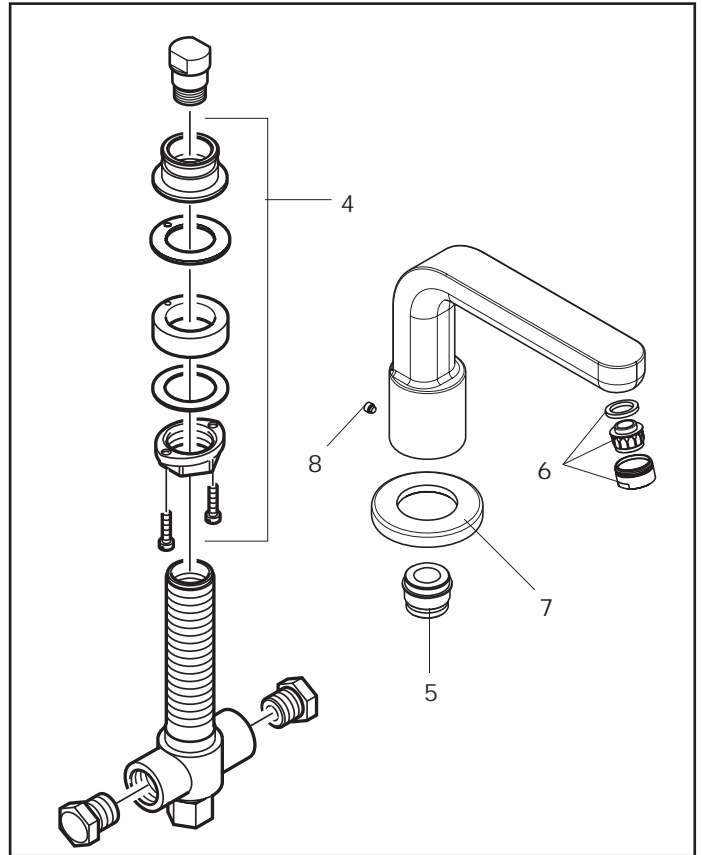
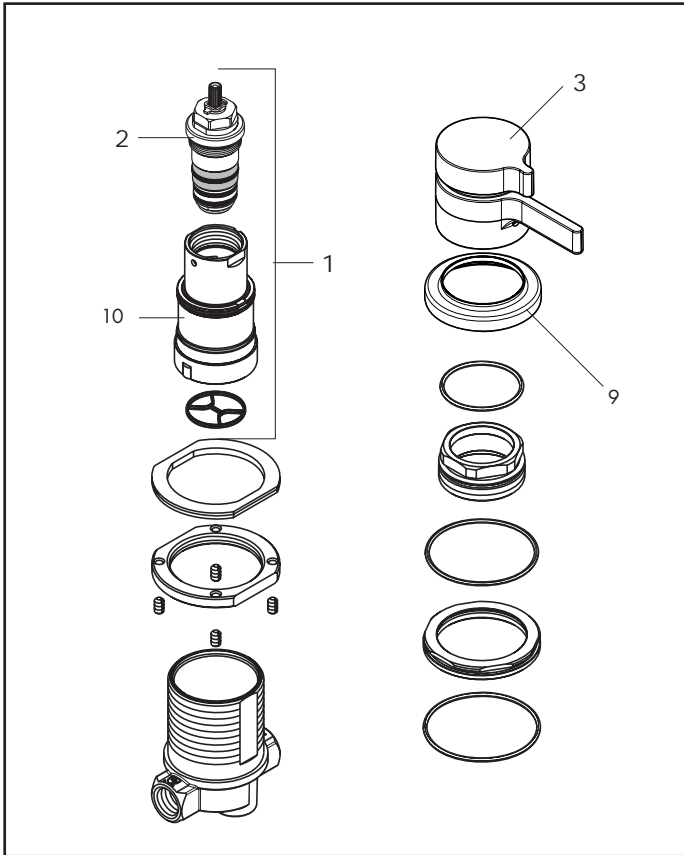
2 hole thermostatic tub filler, spout / Mitigeur bain thermostatique, bec / Mezclador termostatico para baño, caño



06401xx0



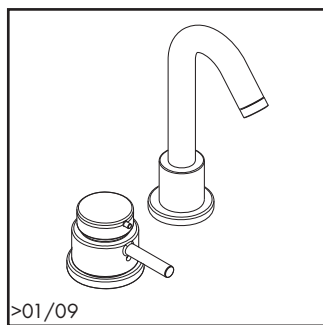
06402xx0



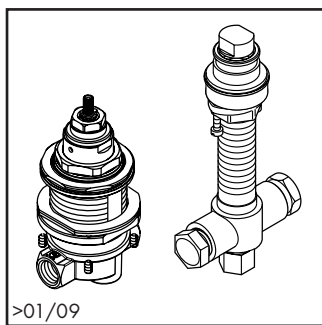
| Pos. | Description | Description | Denominación | No./Nr./N° | PG |
|------|-----------------------------|-----------------------------|--------------------------|------------|-------|
| 1 | cartridge with shutoff unit | mécanisme inverseur/arrêt | montura con inversor | 88586000 | 1 18 |
| 2 | thermostat cartridge | cartouche thermostatique | termoelemento | 94282000 | 1 15 |
| 3 | handle | poignée | mando | 88713xx0 | 1 12* |
| 4 | fixing set | fixation cpl. | set de fijación completo | 96080000 | 1 10 |
| 5 | spout sealing ring | joint | junta | 88512000 | 1 8 |
| 6 | aerator | aérateur | aireador | 13914xx0 | 1 4* |
| 7 | escutcheon | rosace | florón | 97779xx0 | 1 99 |
| 8 | screw | vis | tornillo | 96029000 | 1 3 |
| 9 | escutcheon | rosace | florón | 88734xx0 | 1 99 |
| 10 | diverter / stop unit | mécanisme inverseur / arrêt | montura con inversor | 88723000 | 1 11 |
| | | | | | |
| | | | | | |
| | | | | | |
| | | | | | |
| | | | | | |
| | | | | | |
| | | | | | |
| | | | | | |
| | | | | | |
| | | | | | |
| | | | | | |
| | | | | | |
| | | | | | |

Talis® S

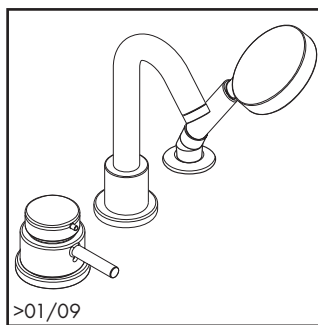
2 hole thermostatic tub filler / Robinet bain thermostatique / Mezclador termostatico para baño



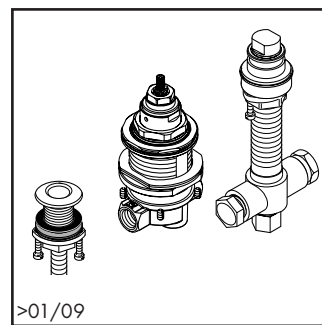
04136xx0



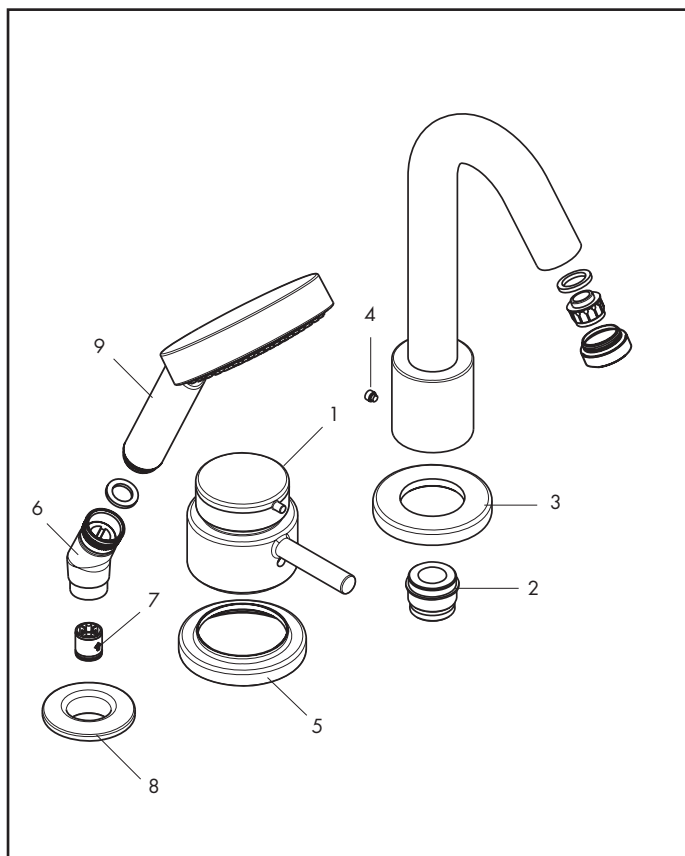
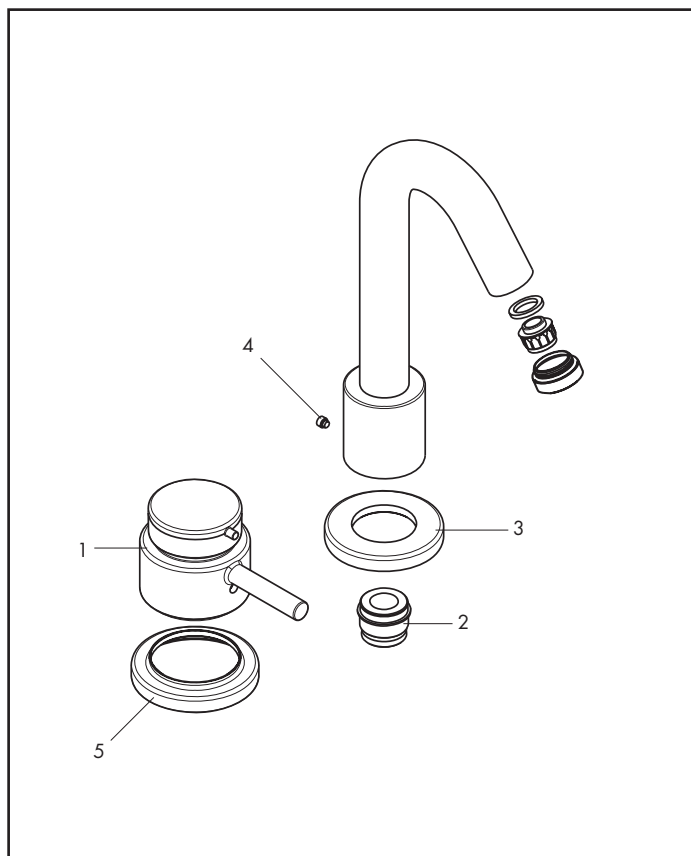
04125181



04127xx1



04124181

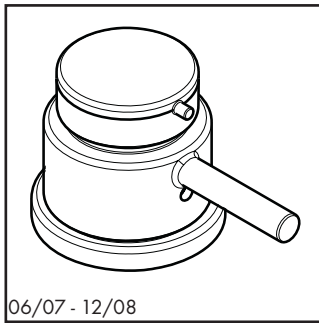


| Pos. | Description | Description | Denominación | No./Nr./N° | PG |
|------|------------------------|--------------------------------|--------------------------------|------------|-------|
| 1 | handle | poignée | mando | 88641xx0 | 1 15* |
| 2 | spout sealing ring | joint | junta | 88512000 | 1 8 |
| 3 | escutcheon | rosace | florón | 97779xx0 | 1 99 |
| 4 | screw | vis | tornillo | 96029000 | 1 3 |
| 5 | escutcheon | rosace | florón | 88734xx0 | 1 99 |
| 6 | elbow | coude de raccordement flexible | rácor conexión flexo | 28071xx0 | 1 9 |
| 7 | check valve (2 pieces) | clapet anti-retour (2 pièces) | válvula antirretorno (2 pieza) | 94074000 | set 3 |
| 8 | flange | rosace | florón | 97159xx0 | 1 10 |
| 9 | handshower | douchette | teleducha | 28504xx1 | 1 98 |
| | rough, see p. 9.22 | set de base, voir p. 9.22 | cuerpo base, ver página 9.22 | 04125181 | |
| | rough, see p. 9.22 | set de base, voir p. 9.22 | cuerpo base, ver página 9.22 | 04124181 | |

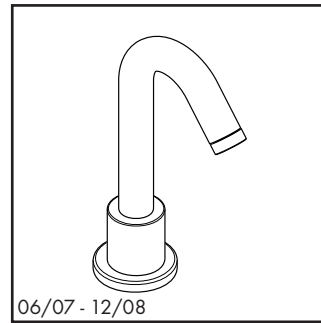
9.4 9/2010 xx = Please see page 9.1 for finish codes / *PG is for Chrome only. See the index for other finishes.
 xx = Description des codes couleur page 9.1 / *PG concerne Chromé seulement. Pour les autres, voir dans la liste des références.
 xx = Para el código de acabados ver página 9.1 / *La PG vale para Cromado solo. Ver el índice para las otras superficies.

Talis® S

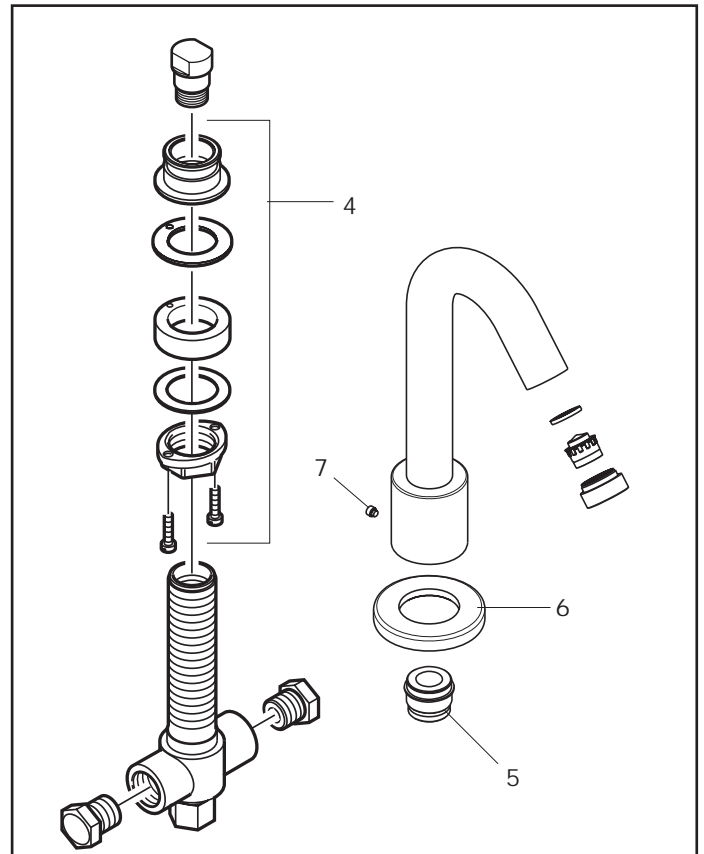
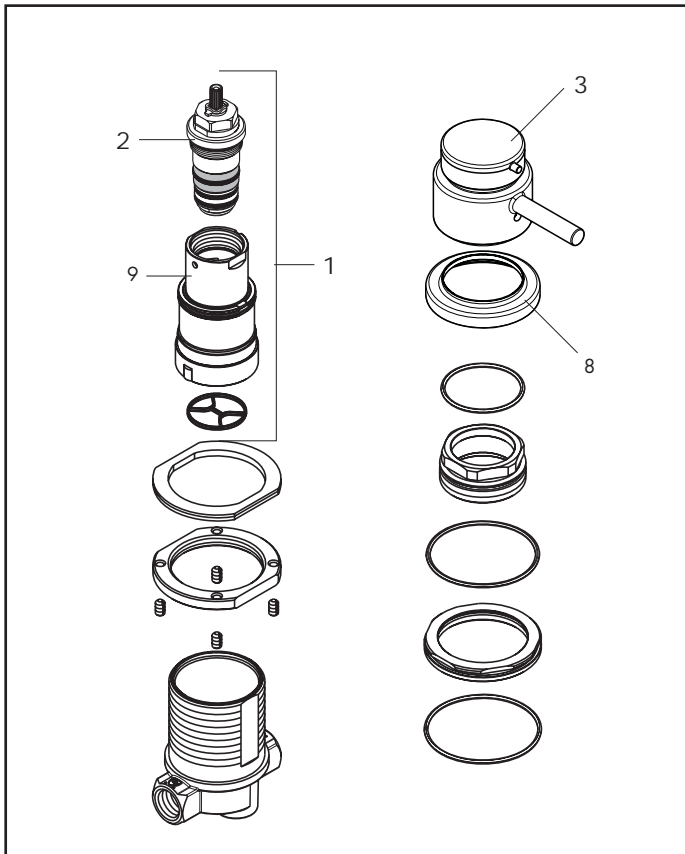
2 hole thermostatic tub filler, spout / Robinet bain thermostatique, bec / Mezclador termostatico para baño, caño



06453xx0



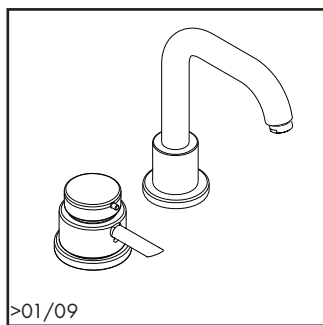
06404xx0



| Pos. | Description | Description | Denominación | No./Nr./N° | PG |
|------|-----------------------------|-----------------------------|--------------------------|------------|-------|
| 1 | cartridge with shutoff unit | mécanisme inverseur/arrêt | montura con inversor | 88586000 | 1 18 |
| 2 | thermostat cartridge | cartouche thermostatique | termoelemento | 94282000 | 1 15 |
| 3 | handle | poignée | mando | 88641xx0 | 1 15* |
| 4 | fixing set | fixation cpl. | set de fijación completo | 96080000 | 1 10 |
| 5 | spout sealing ring | joint | junta | 88512000 | 1 8 |
| 6 | escutcheon | rosace | florón | 97779xx0 | 1 99 |
| 7 | screw | vis | tornillo | 96029000 | 1 3 |
| 8 | escutcheon | rosace | florón | 88734xx0 | 1 99 |
| 9 | diverter / stop unit | mécanisme inverseur / arrêt | montura con inversor | 88723000 | 1 11 |
| | | | | | |
| | | | | | |
| | | | | | |
| | | | | | |
| | | | | | |
| | | | | | |
| | | | | | |
| | | | | | |
| | | | | | |
| | | | | | |

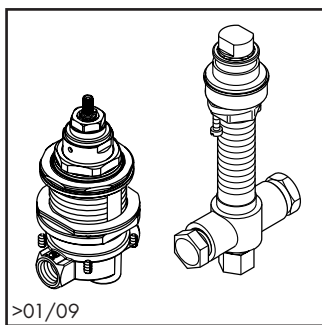
Focus® S

2 hole thermostatic tub filler / Robinet bain thermostatique / Mezclador termostatico para baño



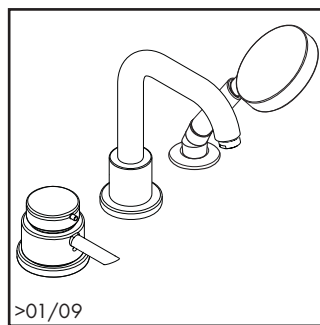
>01/09

04137xx0



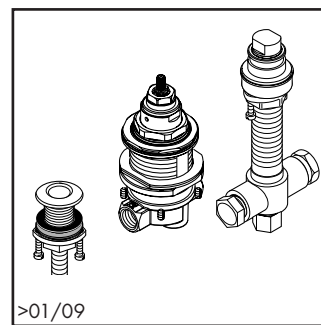
>01/09

04125181



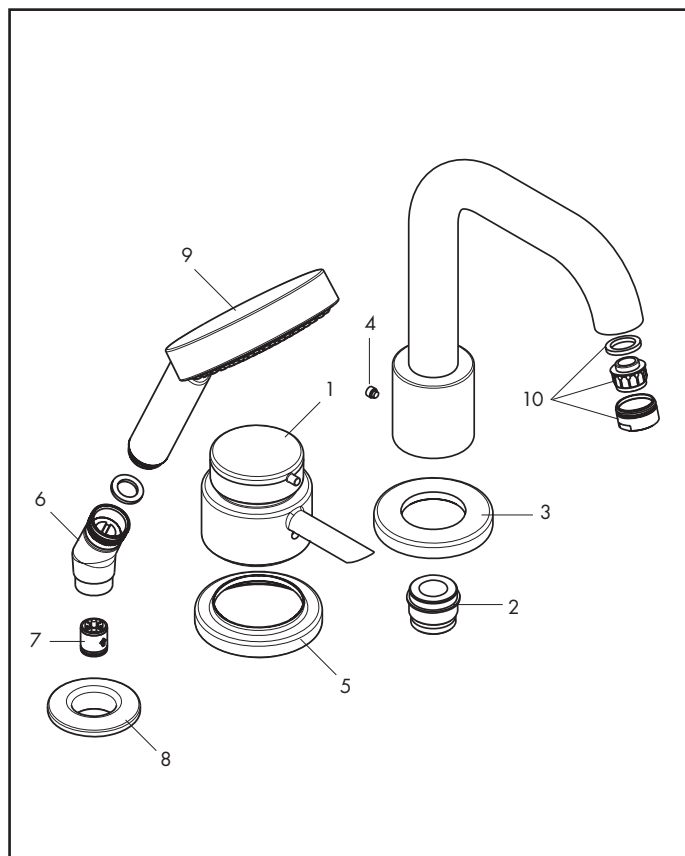
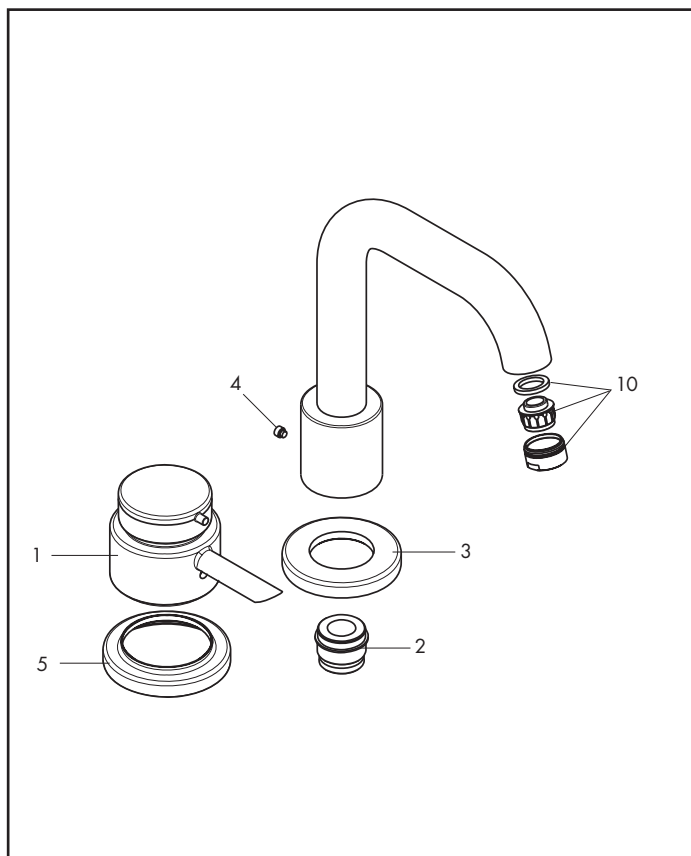
>01/09

04128xx1



>01/09

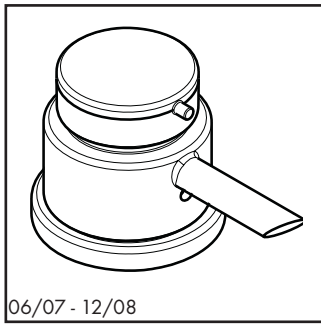
04124181



| Pos. | Description | Description | Denominación | No./Nr./N° | PG |
|------|------------------------|--------------------------------|--------------------------------|------------|-------|
| 1 | handle | poignée | mando | 88714xx0 | 1 13* |
| 2 | spout sealing ring | joint | junta | 88512000 | 1 8 |
| 3 | escutcheon | rosace | florón | 97779xx0 | 1 99 |
| 4 | screw | vis | tornillo | 96029000 | 1 3 |
| 5 | escutcheon | rosace | florón | 88734xx0 | 1 99 |
| 6 | elbow | coude de raccordement flexible | rácor conexión flexo | 28071xx0 | 1 9 |
| 7 | check valve (2 pieces) | clapet anti-retour (2 pièces) | válvula antirretorno (2 pieza) | 94074000 | set 3 |
| 8 | flange | rosace | florón | 97159xx0 | 1 10 |
| 9 | handshower | douchette | teleducha | 28504xx1 | 1 98 |
| 10 | aerator | aérateur | aireador | 13914xx0 | 1 4* |
| | rough, see p. 9.22 | set de base, voir p. 9.22 | cuerpo base, ver página 9.22 | 04125181 | |
| | rough, see p. 9.22 | set de base, voir p. 9.22 | cuerpo base, ver página 9.22 | 04124181 | |

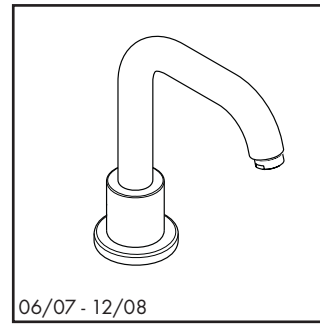
Focus[®] S

2 hole thermostatic tub filler, spout / Mitigeur bain thermostatique, bec / Mezclador termostatico para baño, caño



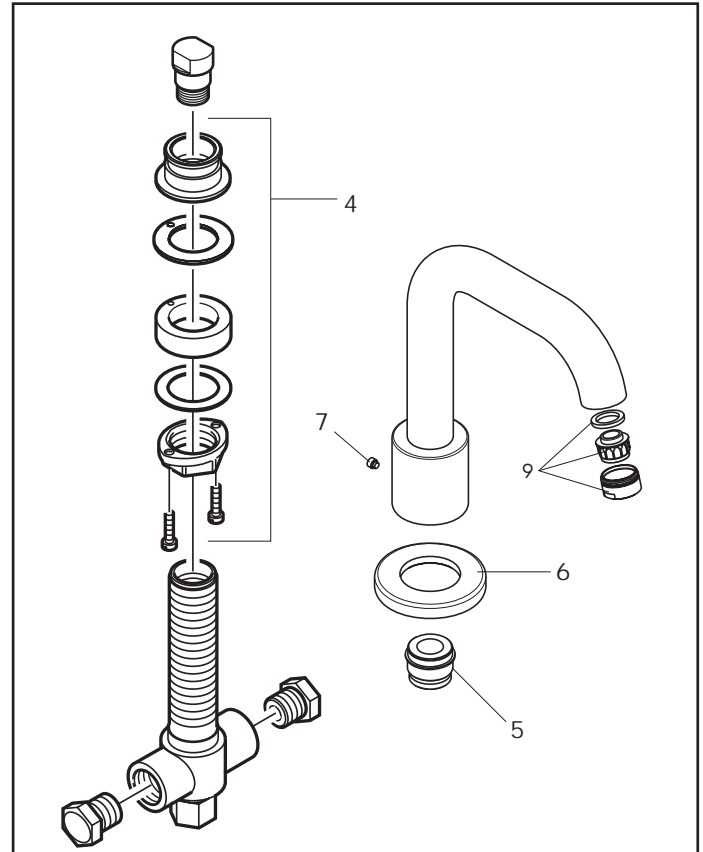
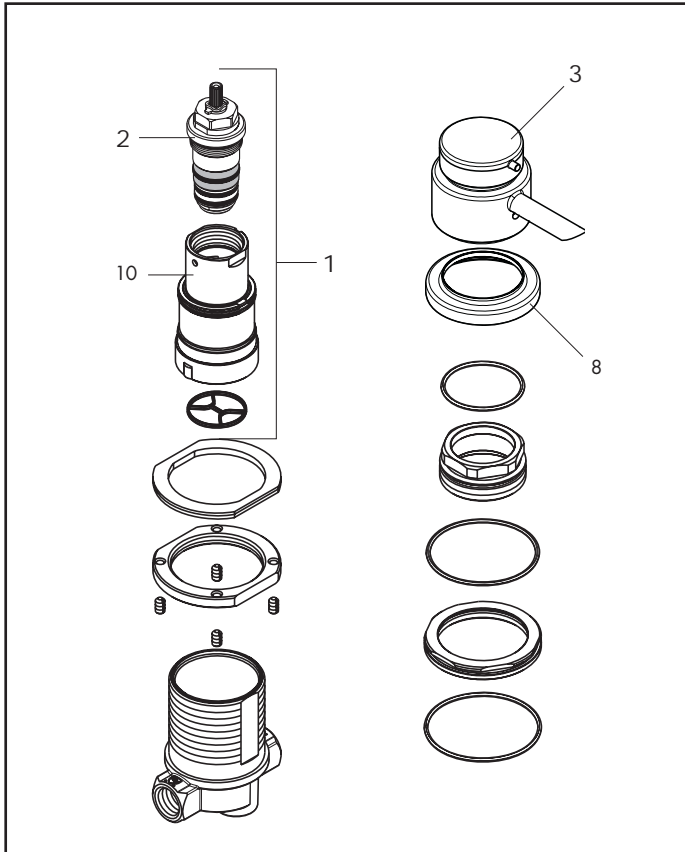
06/07 - 12/08

06405000



06/07 - 12/08

06406000



| Pos. | Description | Description | Denominación | No./Nr./N° | PG |
|------|-----------------------------|-----------------------------|--------------------------|------------|-------|
| 1 | cartridge with shutoff unit | mécanisme inverseur/arrêt | montura con inversor | 88586000 | 1 18 |
| 2 | thermostat cartridge | cartouche thermostatique | termoelemento | 94282000 | 1 15 |
| 3 | handle | poignée | mando | 88714xx0 | 1 13* |
| 4 | fixing set | fixation cpl. | set de fijación completo | 96080000 | 1 10 |
| 5 | spout sealing ring | joint | junta | 88512000 | 1 8 |
| 6 | escutcheon | rosace | florón | 97779000 | 1 13 |
| 7 | screw | vis | tornillo | 96029000 | 1 3 |
| 8 | escutcheon | rosace | florón | 88734xx0 | 1 99 |
| 9 | aerator | aérateur | aireador | 13914xx0 | 1 4* |
| 10 | diverter / stop unit | mécanisme inverseur / arrêt | montura con inversor | 88723000 | 1 11 |
| | | | | | |
| | | | | | |
| | | | | | |
| | | | | | |
| | | | | | |
| | | | | | |
| | | | | | |
| | | | | | |
| | | | | | |
| | | | | | |

hansgrohe

xx = Please see page 9.1 for finish codes / *PG is for Chrome only. See the index for other finishes.

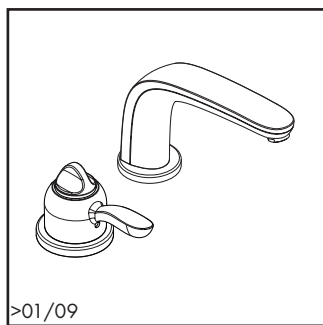
xx = Description des codes couleur page 9.1 / *PG concerne Chromé seulement. Pour les autres, voir dans la liste des références.

xx = Para el código de acabados ver página 9.1 / *La PG vale para Cromado solo. Ver el índice para las otras superficies.

9.7
9/2010

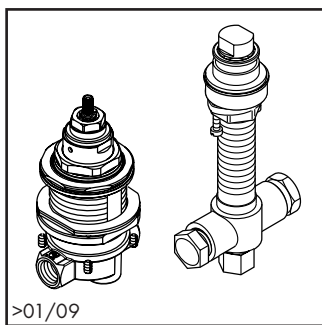
Solaris® E

2 hole thermostatic tub filler / Robinet bain thermostatique / Mezclador termostatico para baño



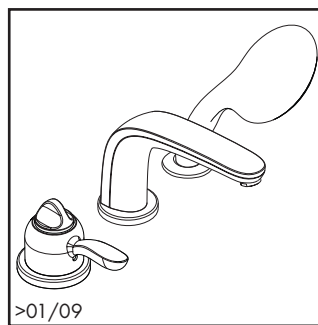
>01/09

04138xx0



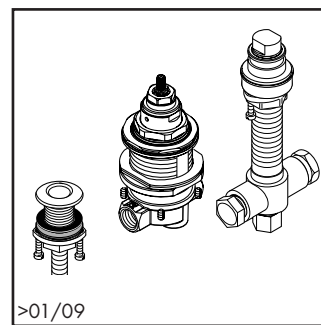
>01/09

04125181



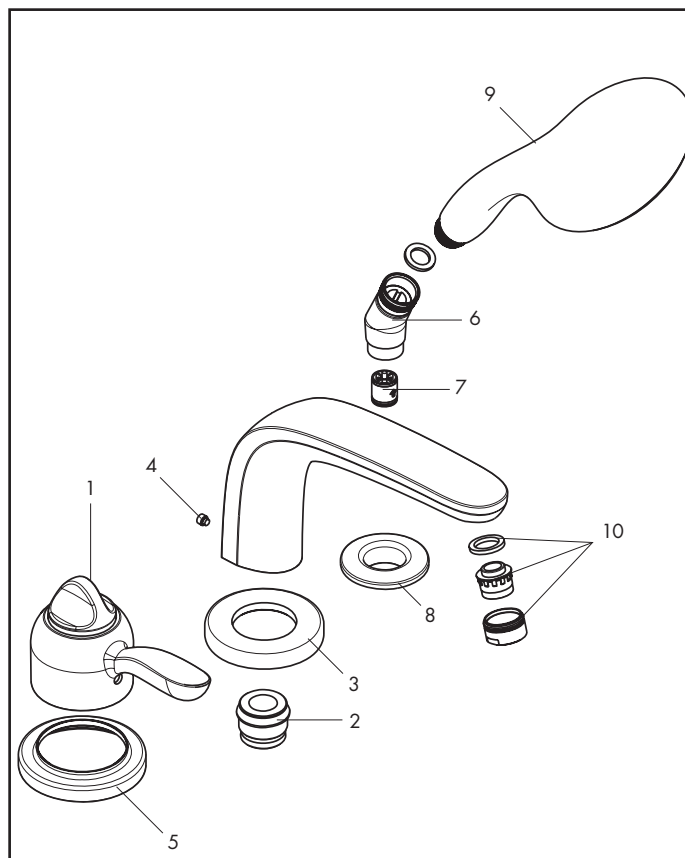
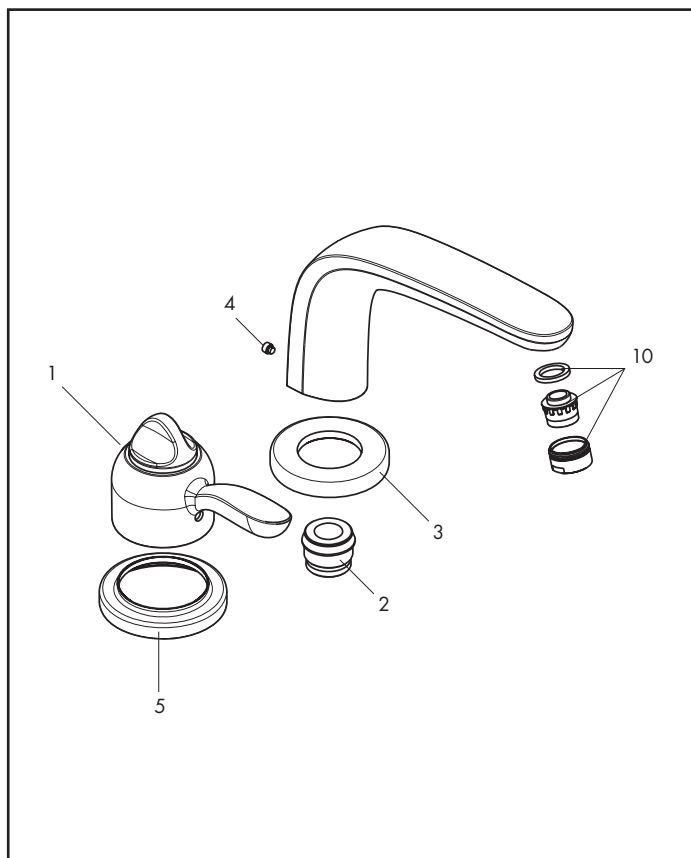
>01/09

04129xx1

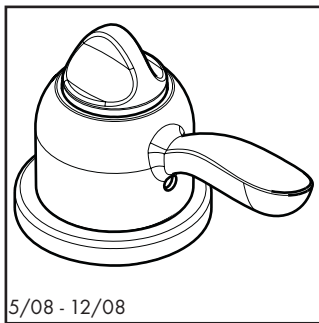


>01/09

04124181

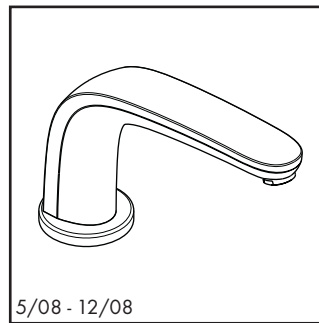


| Pos. | Description | Description | Denominación | No./Nr./N° | PG |
|------|------------------------|--------------------------------|--------------------------------|------------|-------|
| 1 | handle | poignée | mando | 88530xx0 | 1 14* |
| 2 | spout sealing ring | joint | junta | 88512000 | 1 8 |
| 3 | escutcheon | rosace | florón | 97779xx0 | 1 99 |
| 4 | screw | vis | tornillo | 96029000 | 1 3 |
| 5 | escutcheon | rosace | florón | 88734xx0 | 1 99 |
| 6 | elbow | coude de raccordement flexible | rácor conexión flexo | 28071xx0 | 1 9 |
| 7 | check valve (2 pieces) | clapet anti-retour (2 pièces) | válvula antirretorno (2 pieza) | 94074000 | set 3 |
| 8 | flange | rosace | florón | 97159xx0 | 1 10 |
| 9 | handshower | douchette | teleducha | 28502xx1 | 1 98 |
| 10 | aerator | aérateur | aireador | 13914xx0 | 1 4* |
| | rough, see p. 9.22 | set de base, voir p. 9.22 | cuerpo base, ver página 9.22 | 04125181 | |
| | rough, see p. 9.22 | set de base, voir p. 9.22 | cuerpo base, ver página 9.22 | 04124181 | |



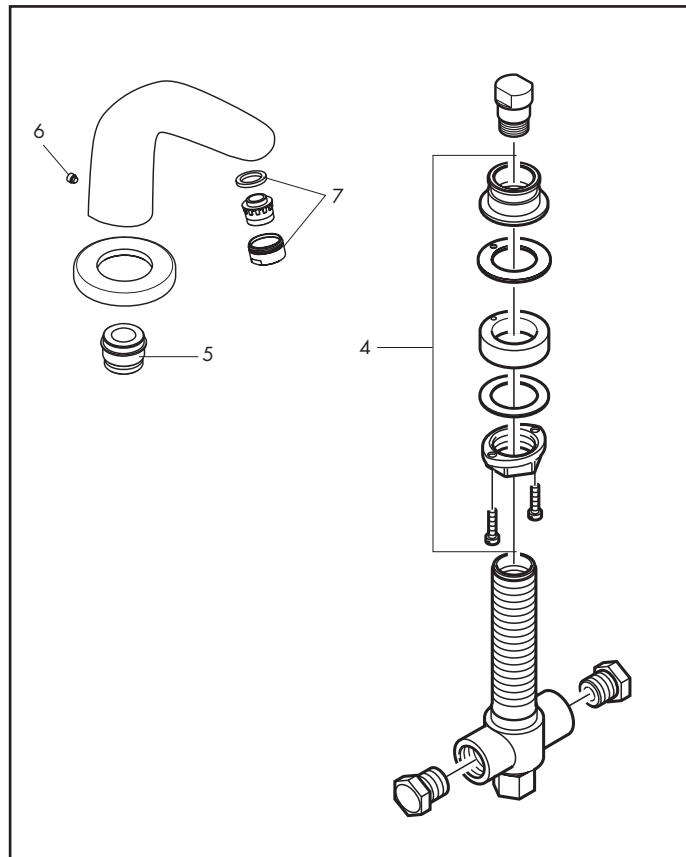
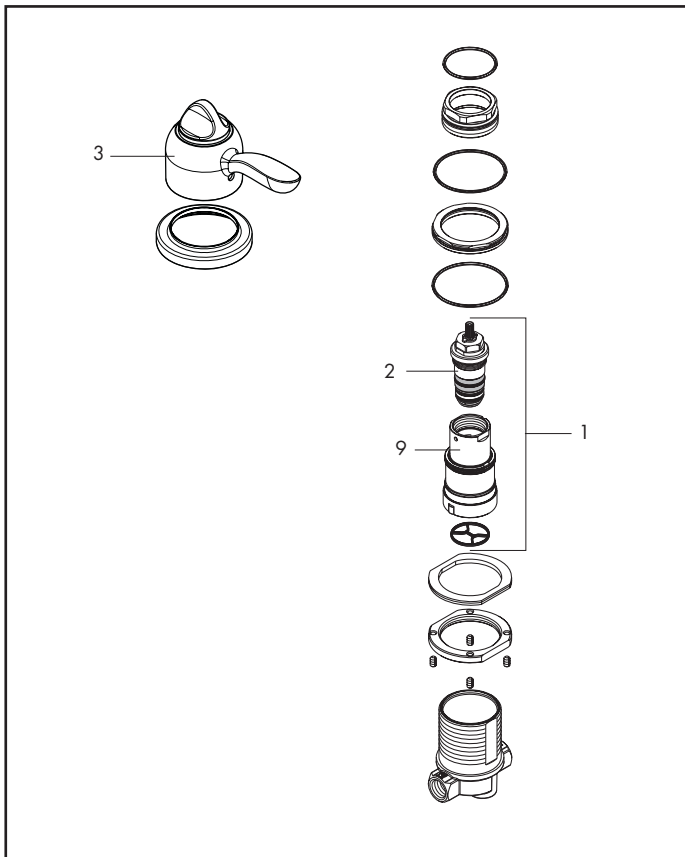
5/08 - 12/08

04172xx0



5/08 - 12/08

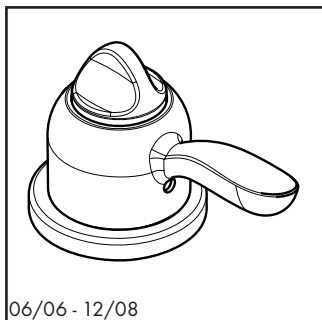
04206xx0



| Pos. | Description | Description | Denominación | No./Nr./N° | PG |
|------|-----------------------------|-----------------------------|--------------------------|------------|-------|
| 1 | cartridge with shutoff unit | mécanisme inverseur/arrêt | montura con inversor | 88586000 | 1 18 |
| 2 | thermostat cartridge | cartouche thermostatique | termoelemento | 94282000 | 1 15 |
| 3 | handle | poignée | mando | 88530xx0 | 1 14* |
| 4 | fixing set | fixation cpl. | set de fijación completo | 96080000 | 1 10 |
| 5 | spout sealing ring | joint | junta | 88512000 | 1 8 |
| 6 | screw | vis | tornillo | 97660000 | 1 1 |
| 7 | aerator | aérateur cpl. | aireador completo | 13914xx0 | 1 4* |
| 8 | spout escutcheon | rosace pour bec | florón para caño | 97779xx0 | 1 99 |
| 9 | diverter / stop unit | mécanisme inverseur / arrêt | montura con inversor | 88723000 | 1 11 |
| | | | | | |
| | | | | | |
| | | | | | |
| | | | | | |
| | | | | | |
| | | | | | |
| | | | | | |
| | | | | | |
| | | | | | |
| | | | | | |
| | | | | | |

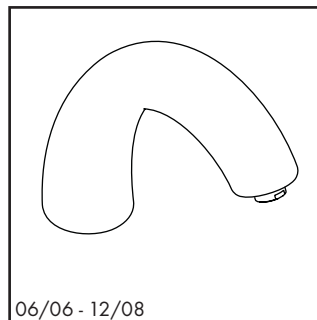
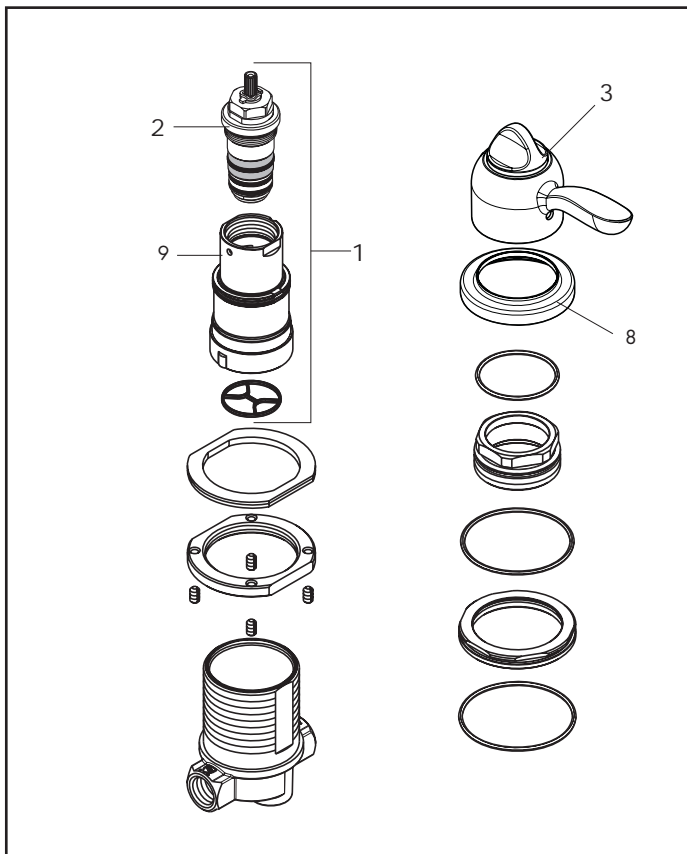
Solaris®

2 hole thermostatic tub filler, spout / Mitigeur bain thermostatique, bec / Mezclador termostatico para baño, caño



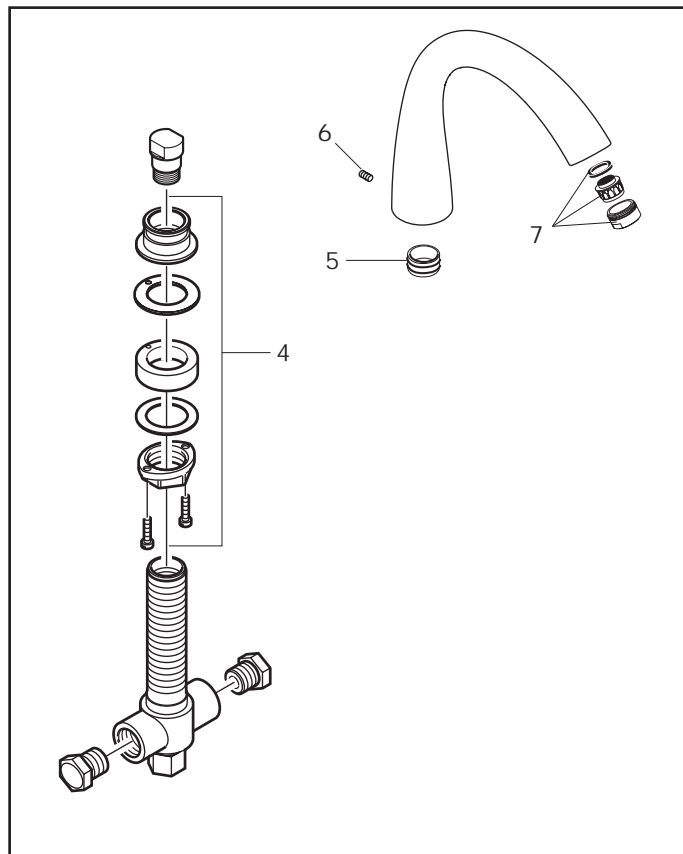
06/06 - 12/08

06450000



06/06 - 12/08

06445000



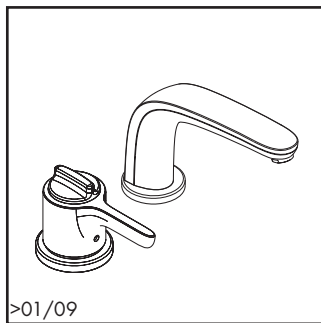
| Pos. | Description | Description | Denominación | No./Nr./N° | PG |
|------|-----------------------------|-----------------------------|--------------------------|------------|-------|
| 1 | cartridge with shutoff unit | mécánisme inverseur/arrêt | montura con inversor | 88586000 | 1 18 |
| 2 | thermostat cartridge | cartouche thermostatique | termoelemento | 94282000 | 1 15 |
| 3 | handle | poignée | mando | 88530xx0 | 1 14* |
| 4 | fixing set | fixation cpl. | set de fijación completo | 96080000 | 1 10 |
| 5 | spout sealing ring | joint | junta | 88512000 | 1 8 |
| 6 | screw | vis | tornillo | 96029000 | 1 3 |
| 7 | aerator | aérateur | aireador completo | 13956xx0 | 1 3* |
| 8 | escutcheon | rosace | florón | 88734xx0 | 1 99 |
| 9 | diverter / stop unit | mécánisme inverseur / arrêt | montura con inversor | 88723000 | 1 11 |
| | | | | | |
| | | | | | |
| | | | | | |
| | | | | | |
| | | | | | |
| | | | | | |
| | | | | | |
| | | | | | |
| | | | | | |
| | | | | | |

9.10
9/2010

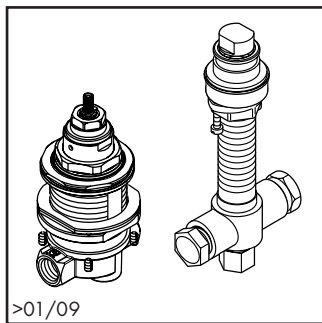
xx = Please see page 9.1 for finish codes / *PG is for Chrome only. See the index for other finishes.
 xx = Description des codes couleur page 9.1 / *PG concerne Chromé seulement. Pour les autres, voir dans la liste des références.
 xx = Para el código de acabados ver página 9.1 / *La PG vale para Cromado solo. Ver el índice para las otras superficies.

Allegro® E

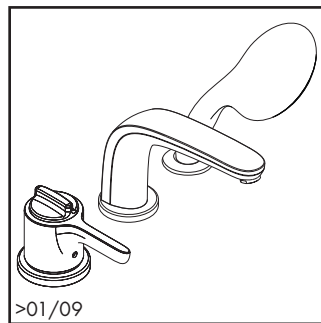
2 hole thermostatic tub filler / Robinet bain thermostatique / Mezclador termostatico para baño



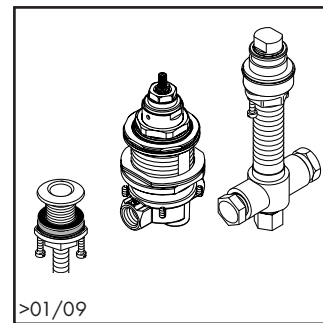
04139xx0



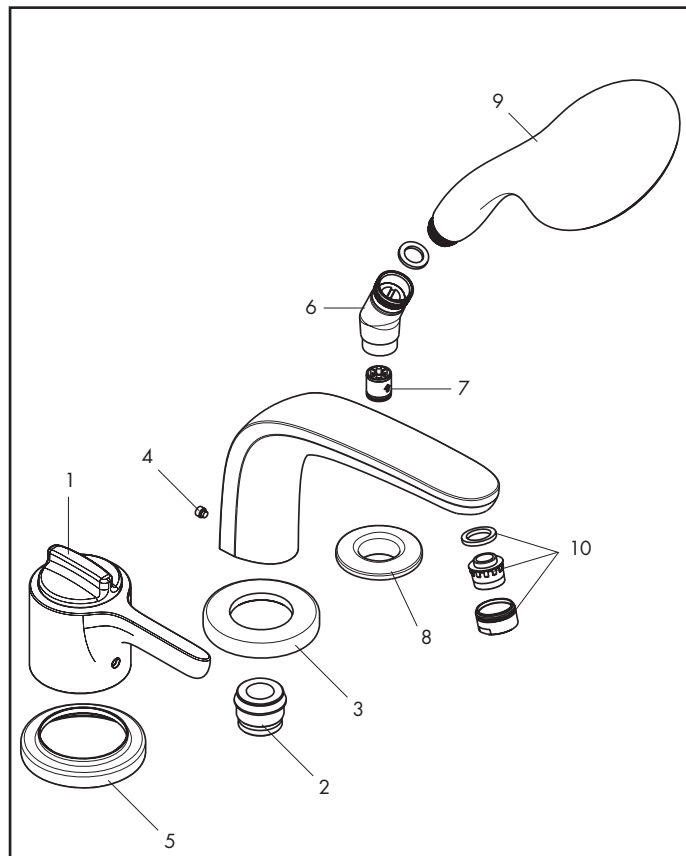
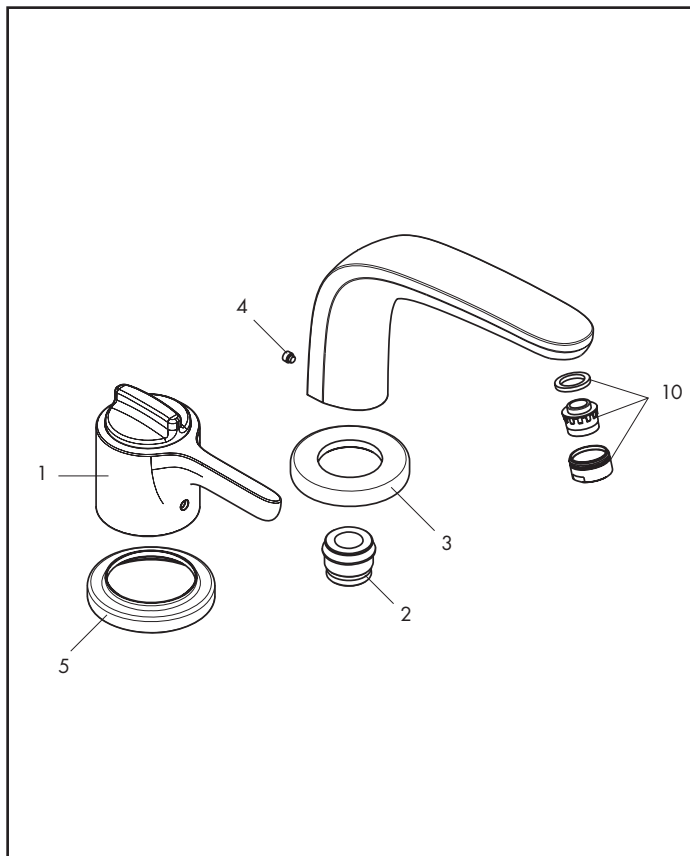
04125181



04130xx1



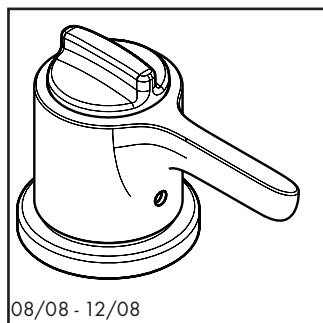
04124181



| Pos. | Description | Description | Denominación | No./Nr./N° | PG |
|------|------------------------|--------------------------------|--------------------------------|------------|-------|
| 1 | handle | poignée | mando | 88719xx0 | 1 12* |
| 2 | spout sealing ring | joint | junta | 88512000 | 1 8 |
| 3 | escutcheon | rosace | florón | 97779xx0 | 1 99 |
| 4 | screw | vis | tornillo | 96029000 | 1 3 |
| 5 | escutcheon | rosace | florón | 88734xx0 | 1 99 |
| 6 | elbow | coude de raccordement flexible | rácor conexión flexo | 28071xx0 | 1 9 |
| 7 | check valve (2 pieces) | clapet anti-retour (2 pièces) | válvula antirretorno (2 pieza) | 94074000 | set 3 |
| 8 | flange | rosace | florón | 97159xx0 | 1 10 |
| 9 | handshower | douchette | teleducha | 28502xx1 | 1 98 |
| 10 | aerator | aérateur | aireador | 13914xx0 | 1 4* |
| | rough, see p. 9.22 | set de base, voir p. 9.22 | cuerpo base, ver página 9.22 | 04125181 | |
| | rough, see p. 9.22 | set de base, voir p. 9.22 | cuerpo base, ver página 9.22 | 04124181 | |

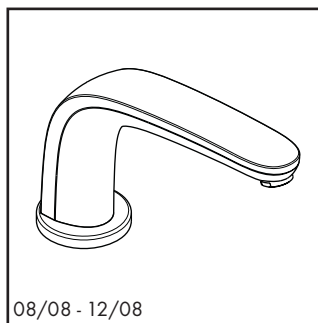
Allegro® E

2 hole thermostatic tub filler, spout / Mitigeur bain thermostatique, bec / Mezclador termostatico para baño, caño



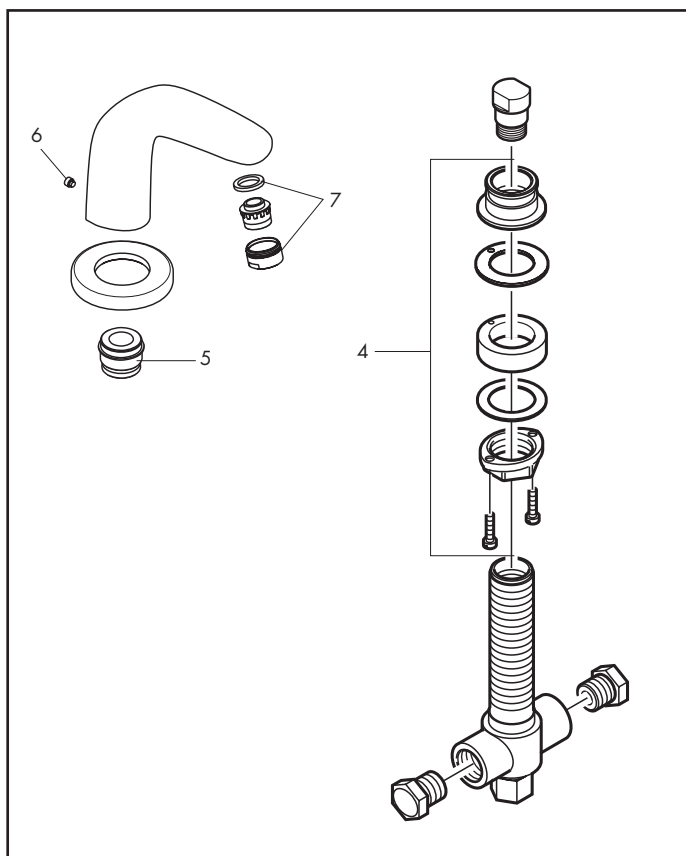
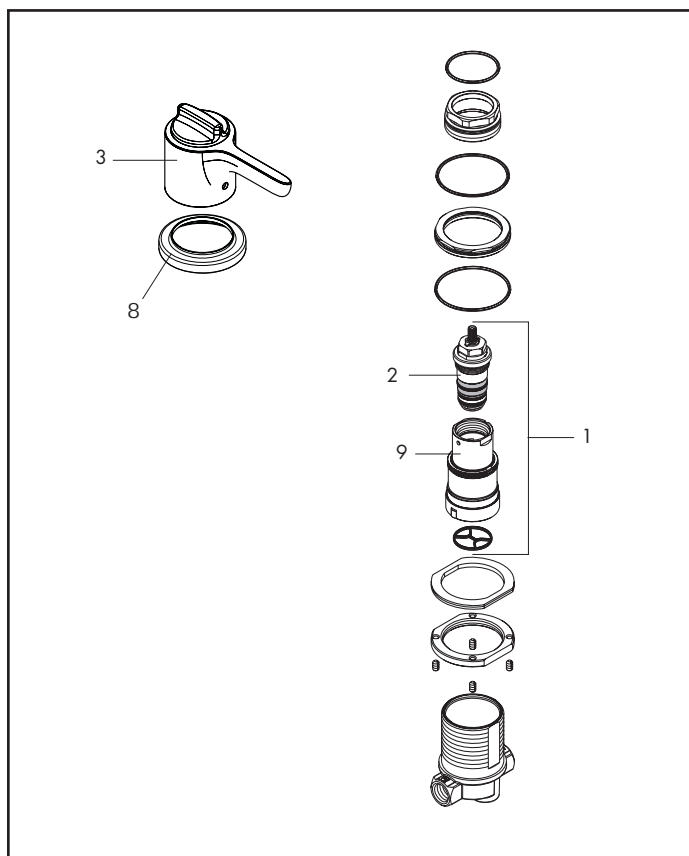
08/08 - 12/08

04185xx0



08/08 - 12/08

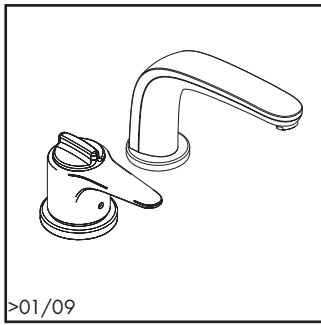
04206xx0



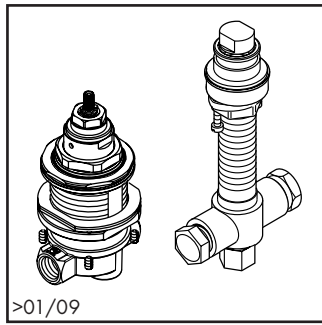
| Pos. | Description | Description | Denominación | No./Nr./N° | PG |
|------|-----------------------------|-----------------------------|--------------------------|------------|-------|
| 1 | cartridge with shutoff unit | mécanisme inverseur/arrêt | montura con inversor | 88586000 | 1 18 |
| 2 | thermostat cartridge | cartouche thermostatique | termoelemento | 94282000 | 1 15 |
| 3 | handle | poignée | mando | 88719xx0 | 1 12* |
| 4 | fixing set | fixation cpl. | set de fijación completo | 96080000 | 1 10 |
| 5 | spout sealing ring | joint | junta | 88512000 | 1 8 |
| 6 | screw | vis | tornillo | 97660000 | 1 1 |
| 7 | aerator | aérateur cpl. | aireador completo | 13914xx0 | 1 4* |
| 8 | escutcheon | rosace | florón | 88734xx0 | 1 99 |
| 9 | diverter / stop unit | mécanisme inverseur / arrêt | montura con inversor | 88723000 | 1 11 |

Metro E

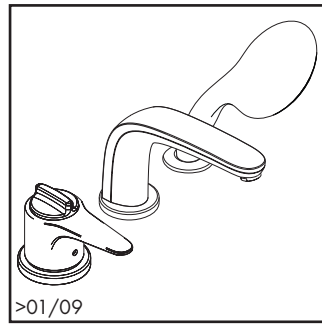
2 hole thermostatic tub filler / Robinet bain thermostatique / Mezclador termostatico para baño



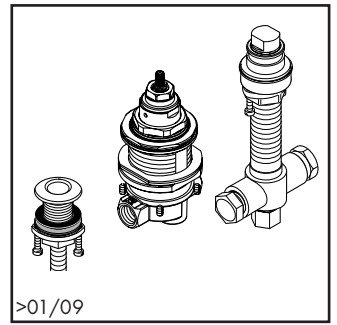
04140xx0



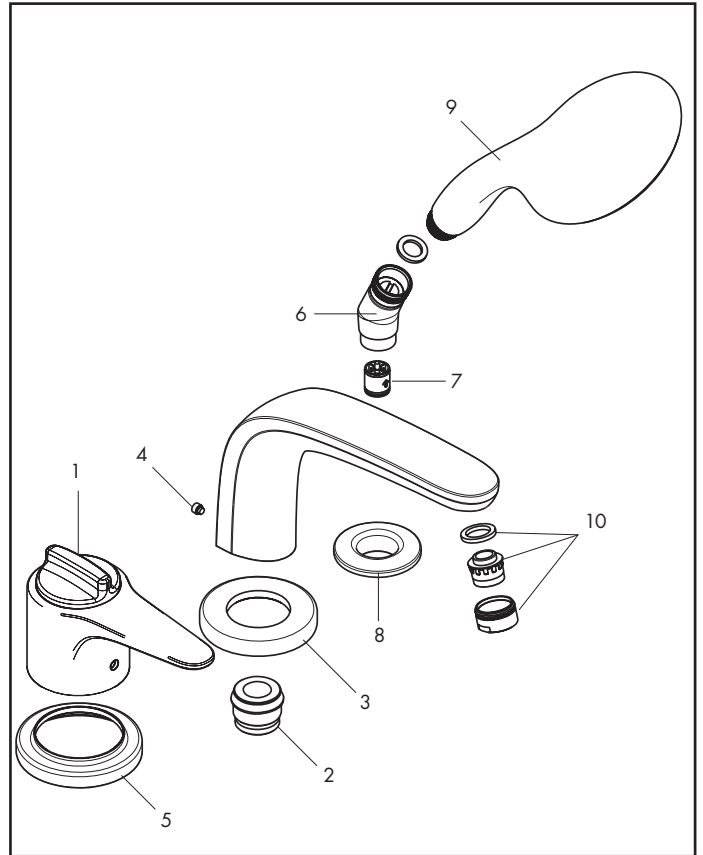
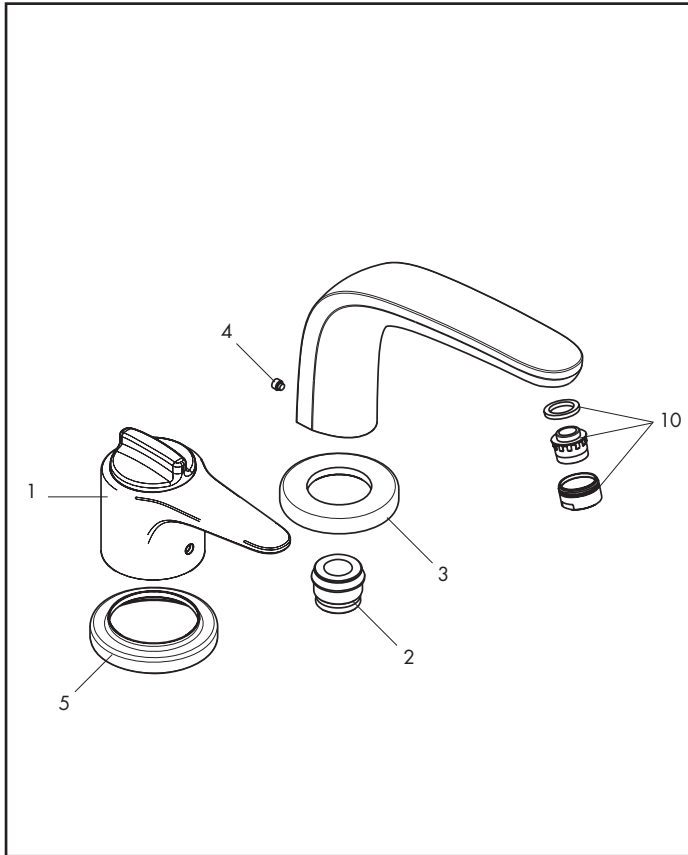
04125181



04131xx1



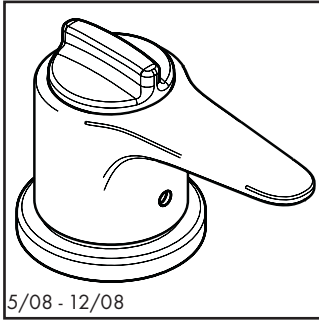
04124181



| Pos. | Description | Description | Denominación | No./Nr./N° | PG |
|------|------------------------|--------------------------------|--------------------------------|------------|-------|
| 1 | handle | poignée | mando | 88721xx0 | 1 99 |
| 2 | spout sealing ring | joint | junta | 88512000 | 1 8 |
| 3 | escutcheon | rosace | florón | 97779xx0 | 1 99 |
| 4 | screw | vis | tornillo | 96029000 | 1 3 |
| 5 | escutcheon | rosace | florón | 88734xx0 | 1 99 |
| 6 | elbow | coude de raccordement flexible | rácor conexión flexo | 28071xx0 | 1 9 |
| 7 | check valve (2 pieces) | clapet anti-retour (2 pièces) | válvula antirretorno (2 pieza) | 94074000 | set 3 |
| 8 | flange | rosace | florón | 97159xx0 | 1 10 |
| 9 | handshower | douchette | teleducha | 28504xx1 | 1 98 |
| 10 | aerator | aérateur | aireador | 13914xx0 | 1 4* |
| | rough, see p. 9.22 | set de base, voir p. 9.22 | cuerpo base, ver página 9.22 | 04125181 | |
| | rough, see p. 9.22 | set de base, voir p. 9.22 | cuerpo base, ver página 9.22 | 04124181 | |

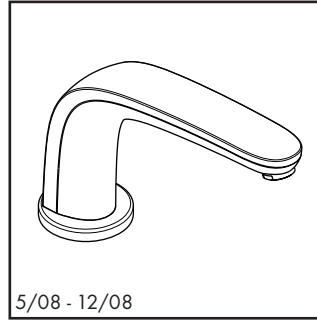
Metro E

2 hole thermostatic tub filler, spout / Mitigeur bain thermostatique, bec / Mezclador termostatico para baño, caño



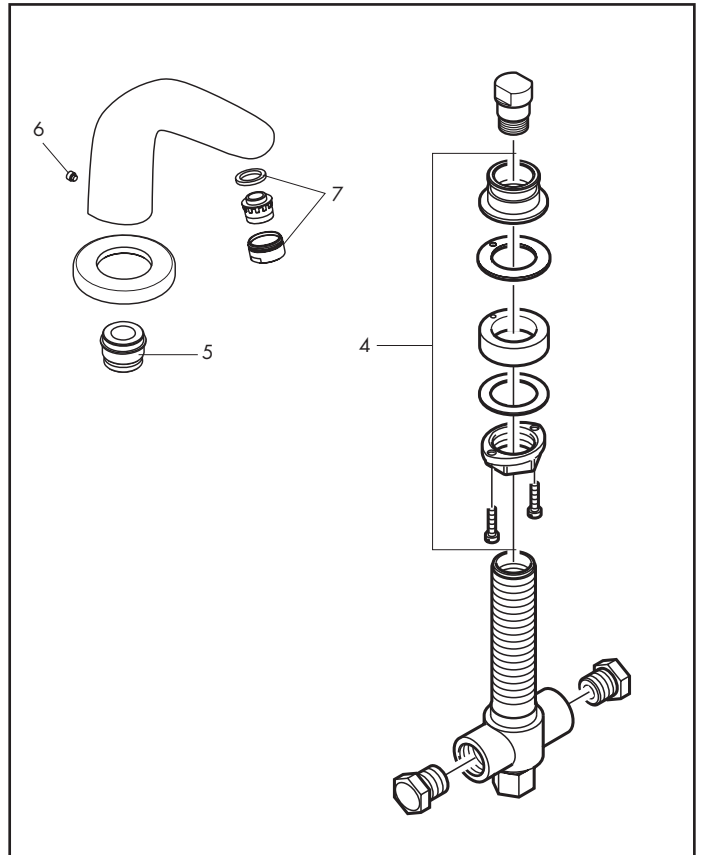
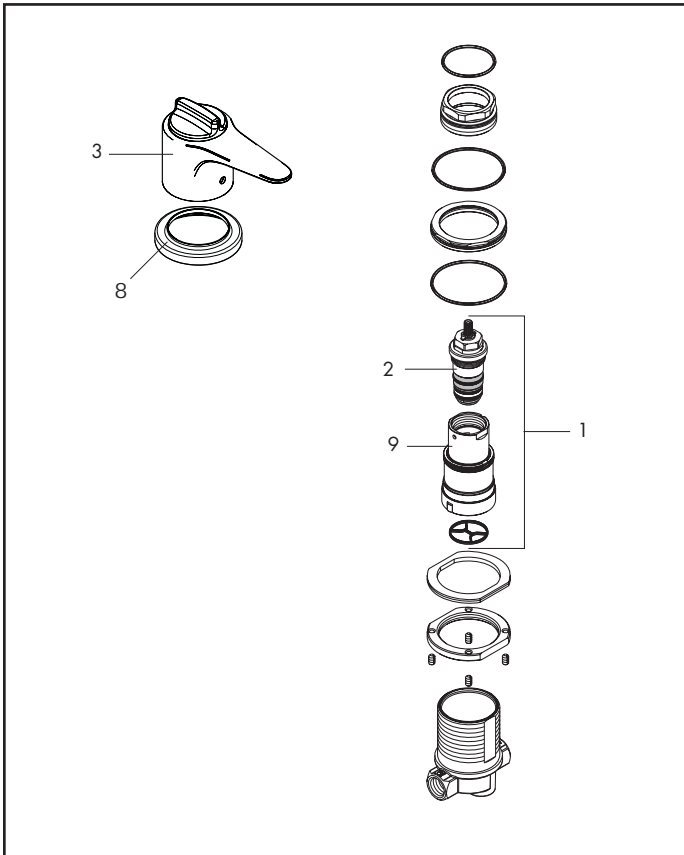
5/08 - 12/08

04198xx0



5/08 - 12/08

04206xx0



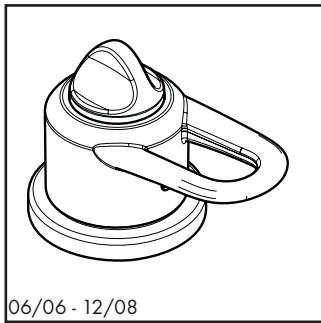
| Pos. | Description | Description | Denominación | No./Nr./N° | PG |
|------|-----------------------------|-----------------------------|--------------------------|------------|------|
| 1 | cartridge with shutoff unit | mécanisme inverseur/arrêt | montura con inversor | 88586000 | 1 18 |
| 2 | thermostat cartridge | cartouche thermostatique | termoelemento | 94282000 | 1 15 |
| 3 | handle | poignée | mando | 88721xx0 | 1 99 |
| 4 | fixing set | fixation cpl. | set de fijación completo | 96080000 | 1 10 |
| 5 | spout sealing ring | joint | junta | 88512000 | 1 8 |
| 6 | screw | vis | tornillo | 97660000 | 1 1 |
| 7 | aerator | aérateur | aireador completo | 13914xx0 | 1 4* |
| 8 | escutcheon | rosace | florón | 88734xx0 | 1 99 |
| 9 | diverter / stop unit | mécanisme inverseur / arrêt | montura con inversor | 88723000 | 1 11 |
| | | | | | |
| | | | | | |
| | | | | | |
| | | | | | |
| | | | | | |
| | | | | | |
| | | | | | |
| | | | | | |
| | | | | | |
| | | | | | |
| | | | | | |

9.14
9/2010

xx = Please see page 9.1 for finish codes / *PG is for Chrome only. See the index for other finishes.
xx = Description des codes couleur page 9.1 / *PG concerne Chromé seulement. Pour les autres, voir dans la liste des références.
xx = Para el código de acabados ver página 9.1 / *La PG vale para Cromado solo. Ver el índice para las otras superficies.

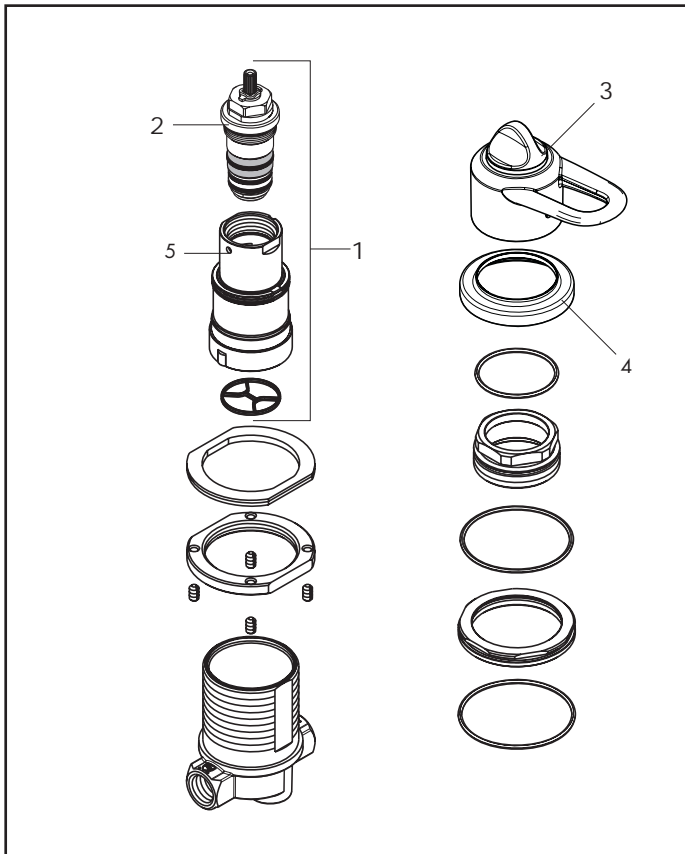
Metro

2 hole thermostatic tub filler / Mitigeur bain thermostatique / Mezclador termostatico para baño



06/06 - 12/08

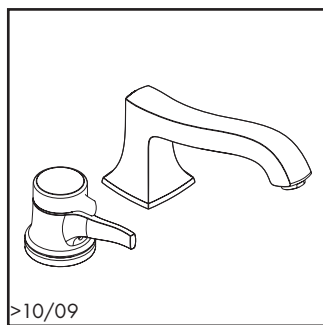
06452000



| Pos. | Description | Description | Denominación | No./Nr./N° | PG |
|------|-----------------------------|-----------------------------|----------------------|------------|-------|
| 1 | cartridge with shutoff unit | mécanisme inverseur/arrêt | montura con inversor | 88586000 | 1 18 |
| 2 | thermostat cartridge | cartouche thermostatique | termoelemento | 94282000 | 1 15 |
| 3 | handle | poignée | mando | 88548xx0 | 1 13* |
| 4 | escutcheon | rosace | florón | 88734xx0 | 1 99 |
| 5 | diverter / stop unit | mécanisme inverseur / arrêt | montura con inversor | 88723000 | 1 11 |
| | | | | | |
| | | | | | |
| | | | | | |
| | | | | | |
| | | | | | |
| | | | | | |
| | | | | | |
| | | | | | |
| | | | | | |
| | | | | | |
| | | | | | |
| | | | | | |
| | | | | | |
| | | | | | |
| | | | | | |
| | | | | | |
| | | | | | |
| | | | | | |
| | | | | | |
| | | | | | |

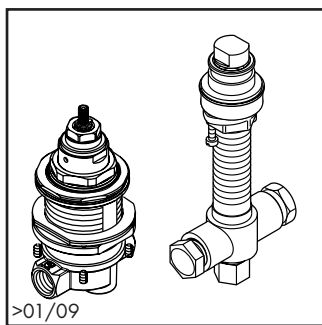
Metris® C

2 hole thermostatic tub filler / Robinet bain thermostatique / Mezclador termostatico para baño



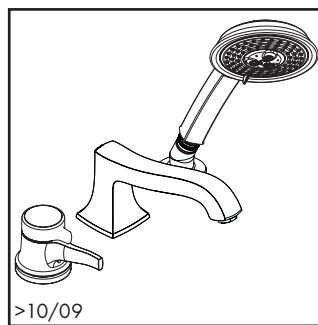
>10/09

04141XX0



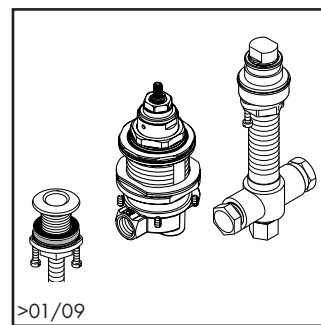
>01/09

04125181



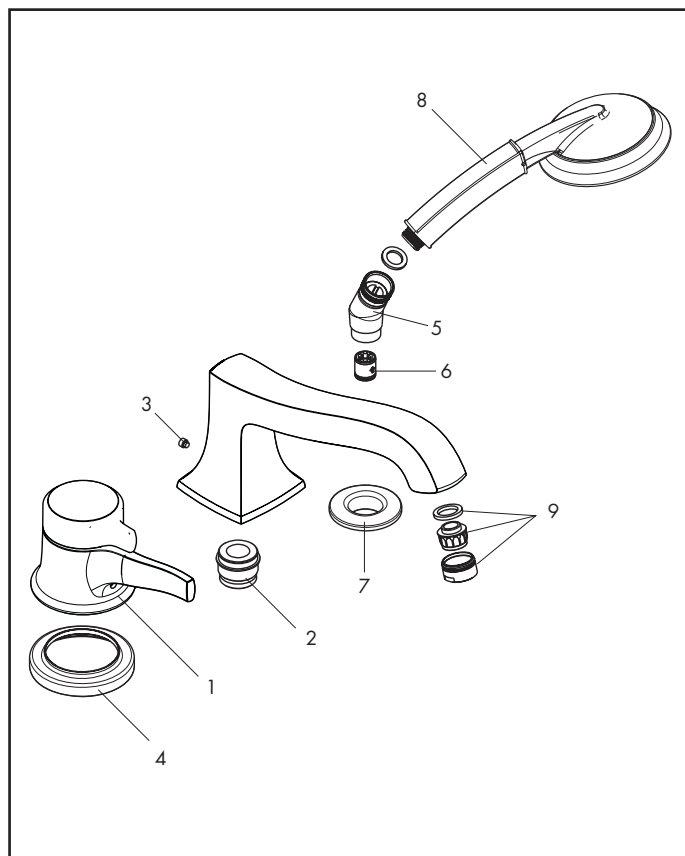
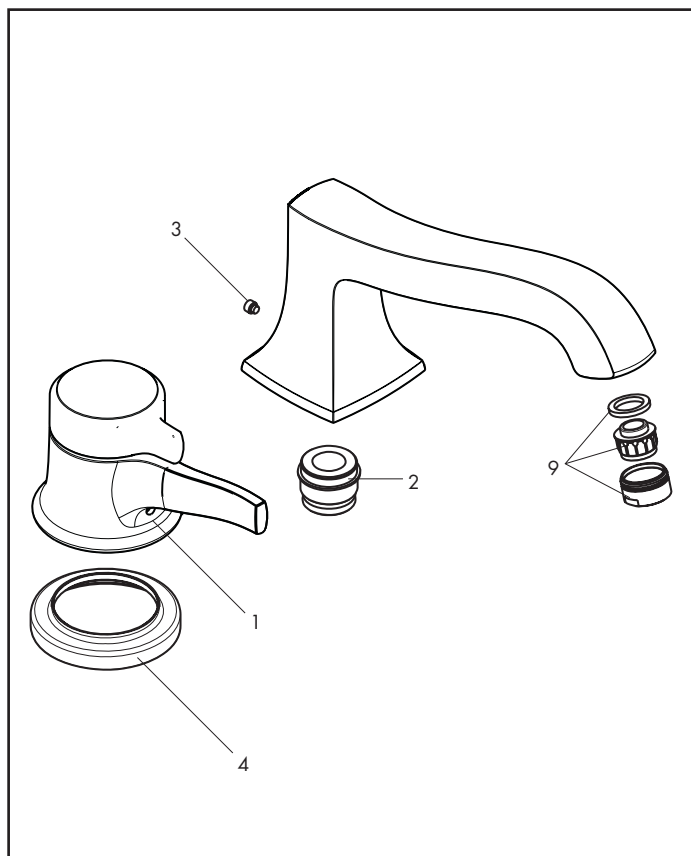
>10/09

04132XX0



>01/09

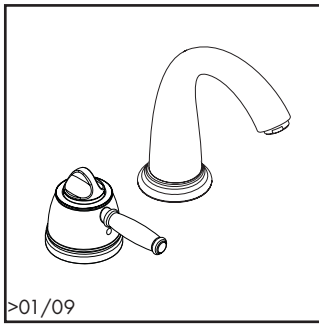
04124XX0



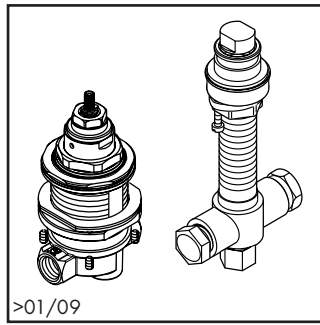
| Pos. | Description | Description | Denominación | No./Nr./N° | PG |
|------|------------------------|--------------------------------|--------------------------------|------------|-------|
| 1 | handle | poignée | mando | | * |
| 2 | spout sealing ring | joint | junta | 88512000 | 1 8 |
| 3 | screw | vis | tornillo | 96029000 | 1 3 |
| 4 | escutcheon | rosace | florón | 88734xx0 | 1 99 |
| 5 | elbow | coude de raccordement flexible | rácór conexión flexo | 28071xx0 | 1 9 |
| 6 | check valve (2 pieces) | clapet anti-retour (2 pièces) | válvula antirretorno (2 pieza) | 94074000 | set 3 |
| 7 | flange | rosace | florón | 97159xx0 | 1 10 |
| 8 | handshower | douchette | teleducha | 04072xx1 | 1 98 |
| 9 | aerator | aérateur | aireador | 13914XX0 | 1 4* |
| | rough, see p. 9.22 | set de base, voir p. 9.22 | cuerpo base, ver página 9.22 | 04125181 | |
| | rough, see p. 9.22 | set de base, voir p. 9.22 | cuerpo base, ver página 9.22 | 04124181 | |

Swing® C

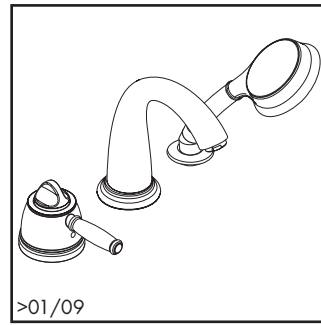
2 hole thermostatic tub filler / Robinet bain thermostatique / Mezclador termostatico para baño



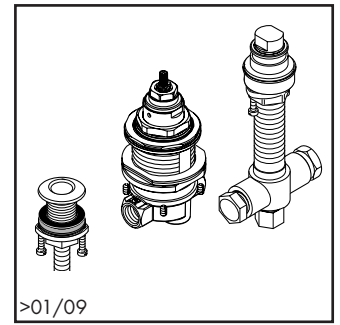
04143xx0



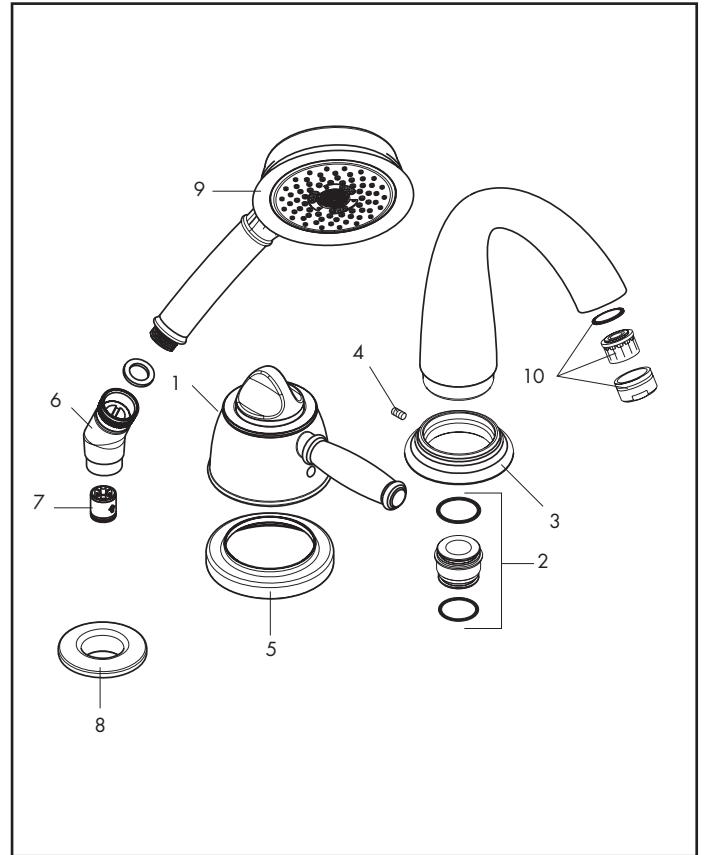
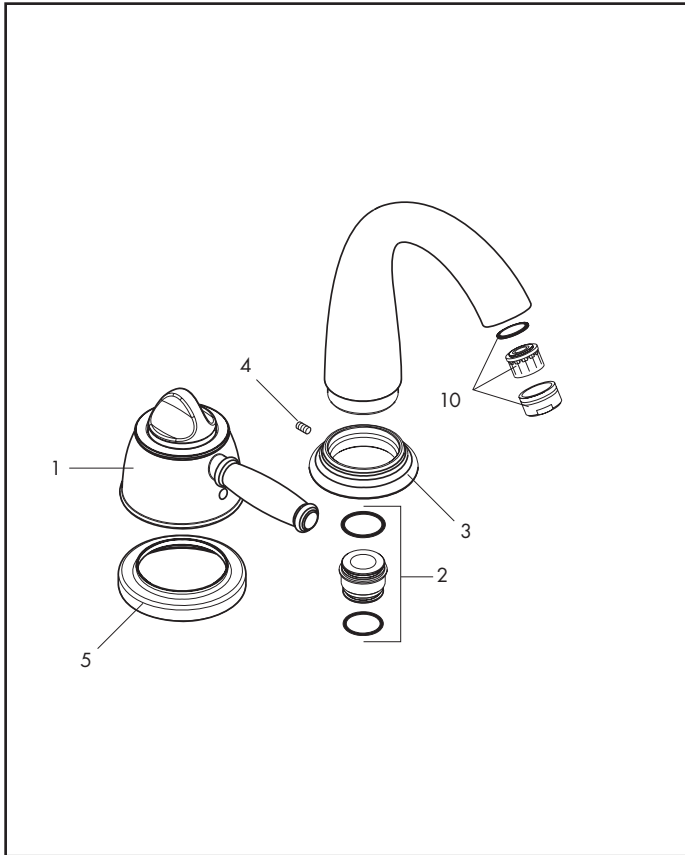
04125181



04134xx1



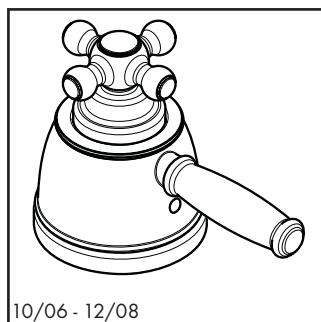
04124181



| Pos. | Description | Description | Denominación | No./Nr./N° | PG |
|------|------------------------|--------------------------------|--------------------------------|------------|-------|
| 1 | handle | poignée | mando | 88610xx0 | 1 14* |
| 2 | spout sealing ring | joint | junta | 88512000 | 1 8 |
| 3 | escutcheon | rosace | florón | 88735xx0 | 1 99 |
| 4 | screw | vis | tornillo | 96029000 | 1 3 |
| 5 | escutcheon | rosace | florón | 88734xx0 | 1 99 |
| 6 | elbow | coude de raccordement flexible | rácor conexión flexo | 28071xx0 | 1 9 |
| 7 | check valve (2 pieces) | clapet anti-retour (2 pièces) | válvula antirretorno (2 pieza) | 94074000 | set 3 |
| 8 | flange | rosace | florón | 97159xx0 | 1 10 |
| 9 | handshower | douchette | teleducha | 04072xx1 | 1 98 |
| 10 | aerator | aérateur | aireador | 13914xx0 | 1 4* |
| | rough, see p. 9.22 | set de base, voir p. 9.22 | cuerpo base, ver página 9.22 | 04125181 | |
| | rough, see p. 9.22 | set de base, voir p. 9.22 | cuerpo base, ver página 9.22 | 04124181 | |

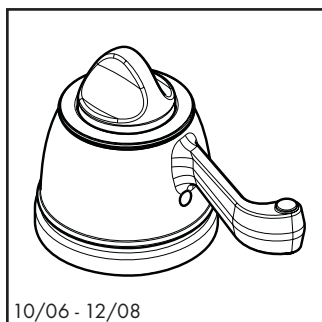
Swing® C

2 hole thermostatic tub filler / Mitigeur bain thermostatique / Mezclador termostatico para baño



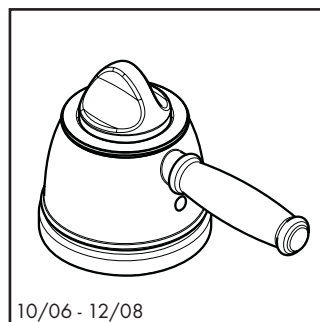
10/06 - 12/08

06454xx0



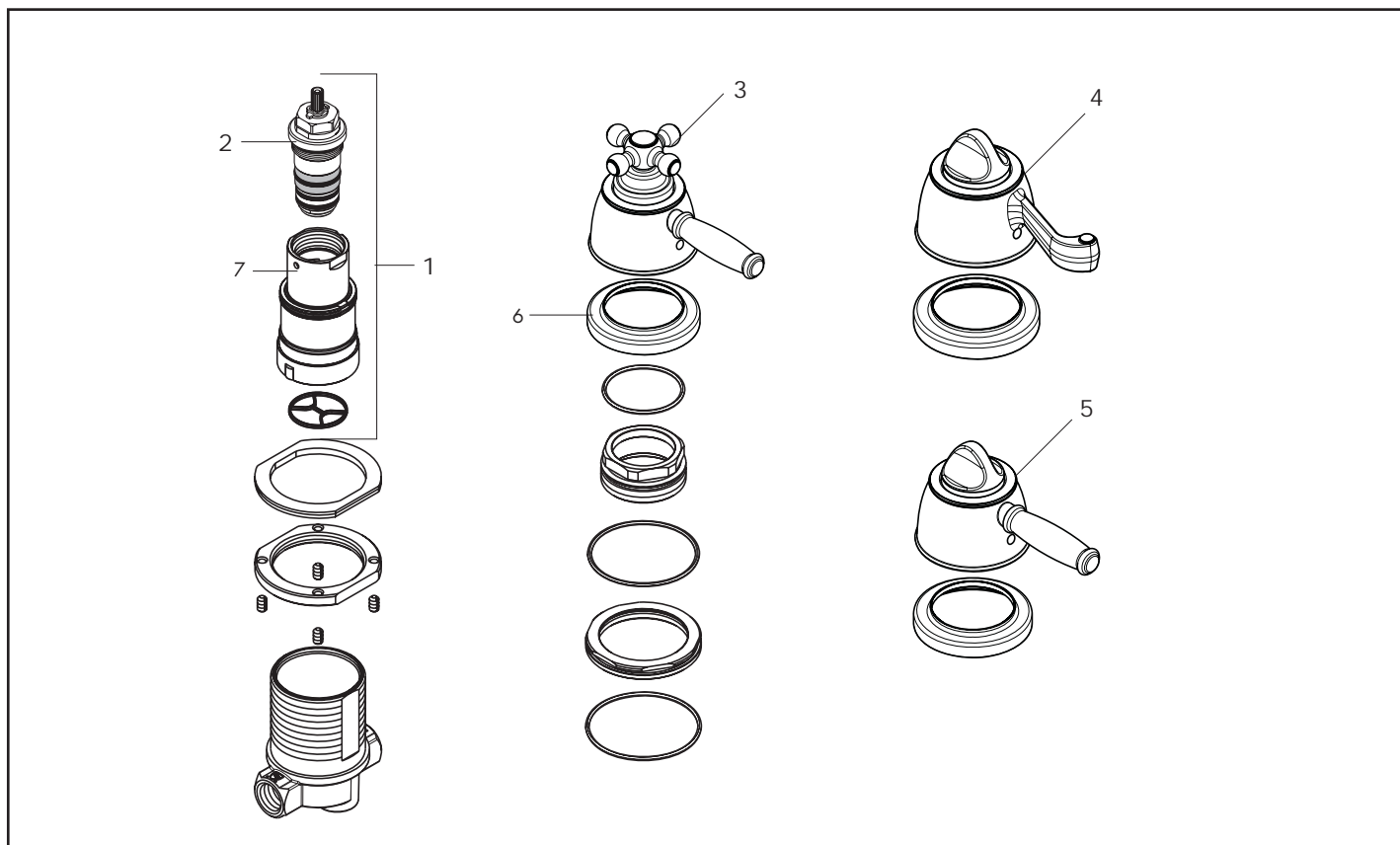
10/06 - 12/08

06455xx0



10/06 - 12/08

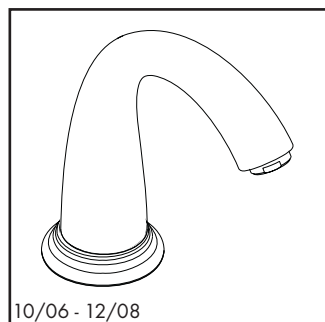
06456xx0



| Pos. | Description | Description | Denominación | No./Nr./N° | PG |
|------|-----------------------------|-----------------------------|----------------------|------------|-------|
| 1 | cartridge with shutoff unit | mécanisme inverseur/arrêt | montura con inversor | 88586000 | 1 18 |
| 2 | thermostat cartridge | cartouche thermostatique | termoelemento | 94282000 | 1 15 |
| 3 | cross handle | poignée croisillon | mando en cruz | 88608xx0 | 1 15* |
| 4 | scroll handle | poignée volute | mando tipo voluta | 88609xx0 | 1 14* |
| 5 | lever handle | poignée levier | mando tipo palanca | 88610xx0 | 1 14* |
| 6 | handle escutcheon | rosace pour poignée | florón para mando | 88734xx0 | 1 99 |
| 7 | diverter / stop unit | mécanisme inverseur / arrêt | montura con inversor | 88723000 | 1 11 |
| | | | | | |
| | | | | | |
| | | | | | |
| | | | | | |
| | | | | | |
| | | | | | |
| | | | | | |
| | | | | | |
| | | | | | |
| | | | | | |
| | | | | | |
| | | | | | |
| | | | | | |
| | | | | | |
| | | | | | |
| | | | | | |
| | | | | | |
| | | | | | |

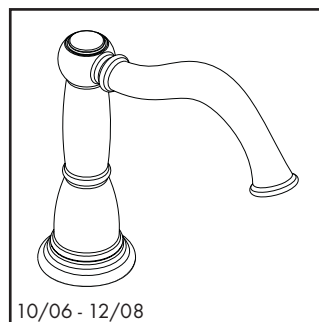
Swing® C / Tango® C

Spout / Bec / Caño



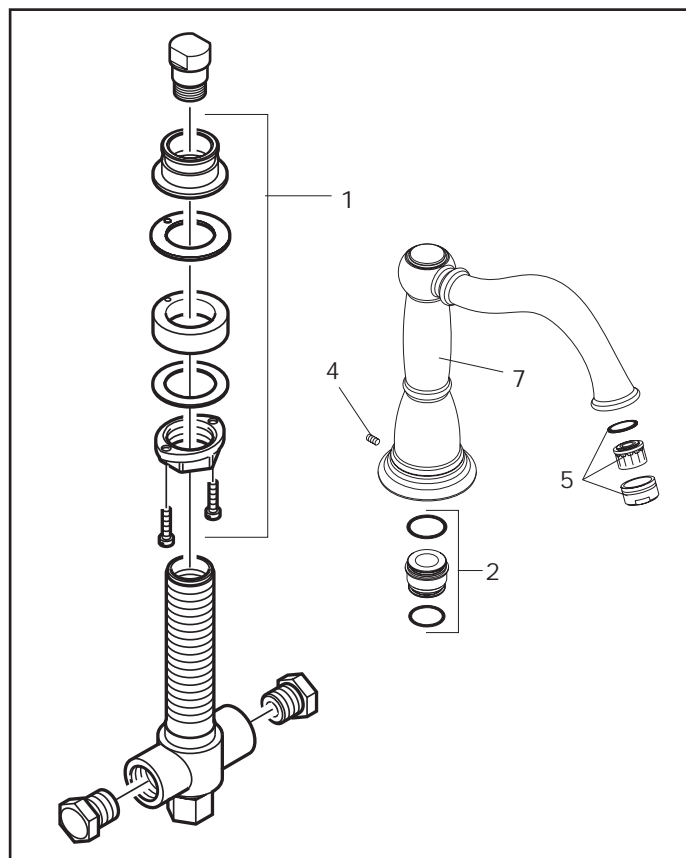
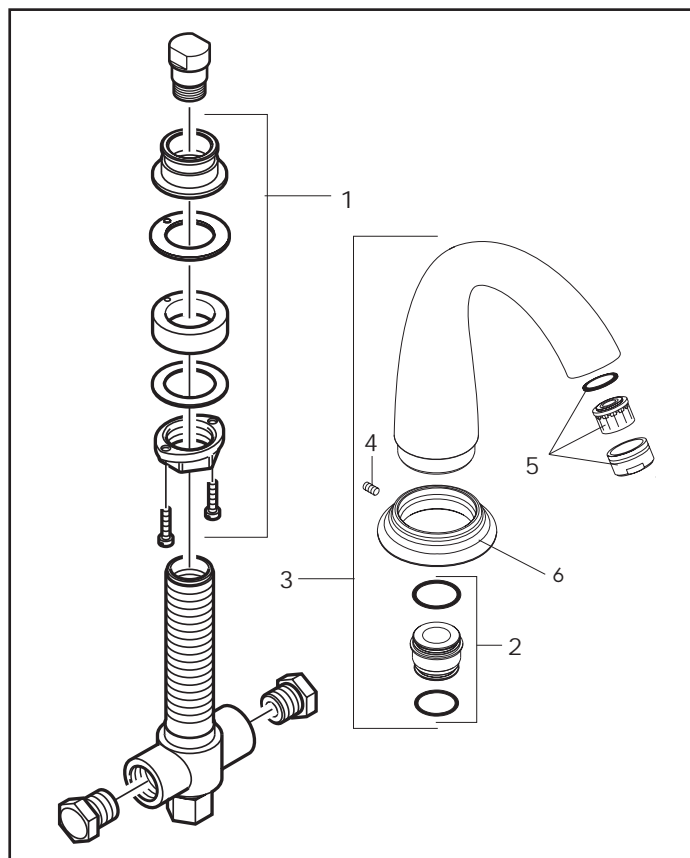
10/06 - 12/08

06448xx0



10/06 - 12/08

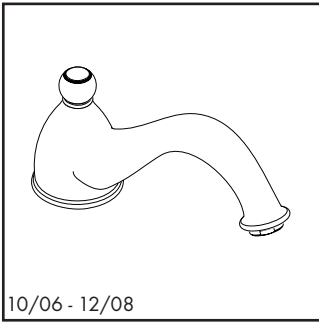
06647xx0



| Pos. | Description | Description | Denominación | No./Nr./N° | PG |
|------|--------------------|-----------------|--------------------------|------------|-------|
| 1 | fixing set | fixation cpl. | set de fijación completo | 96080000 | 1 10 |
| 2 | spout sealing ring | joint | junta | 88512000 | 1 8 |
| 3 | spout | bec | Cano | 88604xx0 | 1 18* |
| 4 | screw | vis | tornillo | 96029000 | 1 3 |
| 5 | aerator | aérateur cpl. | aireador completo | 13956xx0 | 1 3* |
| 6 | spout deco-ring | rosace pour bec | florón para caño | 88735xx0 | 1 99 |
| 7 | spout | bec | Caño | 88605xx0 | 1 16* |
| | | | | | |
| | | | | | |
| | | | | | |
| | | | | | |
| | | | | | |
| | | | | | |
| | | | | | |
| | | | | | |
| | | | | | |
| | | | | | |
| | | | | | |

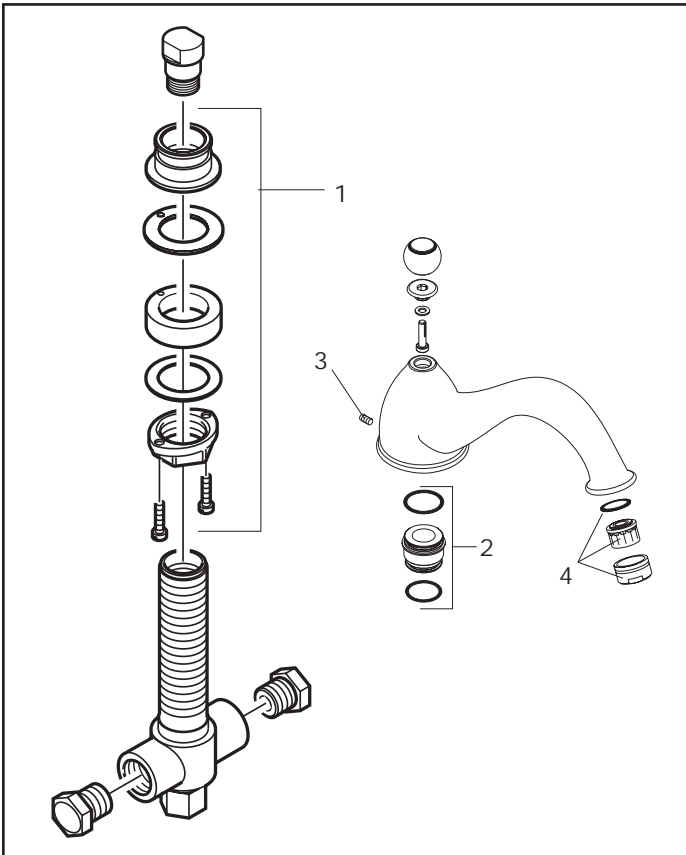
Limbo® C

Spout / Bec / Caño



10/06 - 12/08

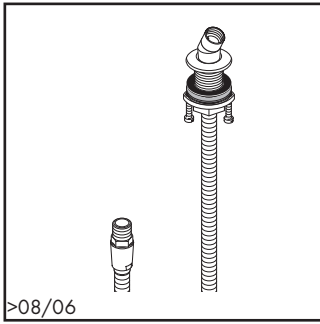
06446xx0



| Pos. | Description | Description | Denominación | No./Nr./N° | PG |
|------|--------------------|---------------|--------------------------|------------|------|
| 1 | fixing set | fixation cpl. | set de fijación completo | 96080000 | 1 10 |
| 2 | spout sealing ring | joint | junta | 88512000 | 1 8 |
| 3 | screw | vis | tornillo | 96029000 | 1 3 |
| 4 | aerator | aérateur cpl. | aireador completo | 13956xx0 | 1 3* |
| | | | | | |
| | | | | | |
| | | | | | |
| | | | | | |
| | | | | | |
| | | | | | |
| | | | | | |
| | | | | | |
| | | | | | |
| | | | | | |
| | | | | | |

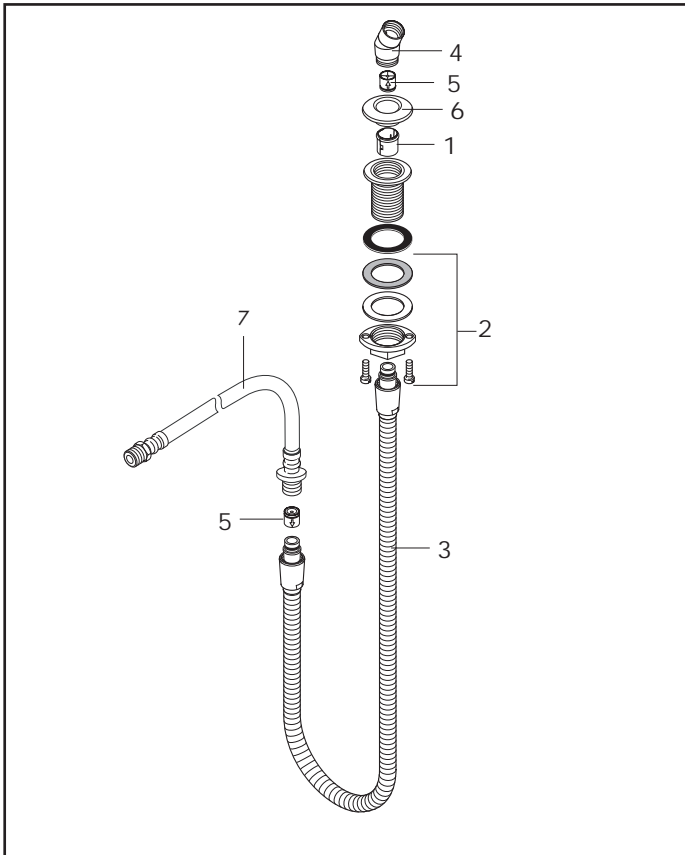
9.20 xx = Please see page 9.1 for finish codes / *PG is for Chrome only. See the index for other finishes.
 9/2010 xx = Description des codes couleur page 9.1 / *PG concerne Chromé seulement. Pour les autres, voir dans la liste des références.
 xx = Para el código de acabados ver página 9.1 / *La PG vale para Cromado solo. Ver el índice para las otras superficies.

Hose pull-out set



>08/06

06438xx0



| Pos. | Description | Description | Denominación | No./Nr./N° | PG |
|------|------------------------|--------------------------------|---------------------------------------|------------|-------|
| 1 | hose guide | mandrin pour support douchette | Inserción para soporte para teleducha | 96942000 | 1 15 |
| 2 | mounting kit | fixation cpl | set de fijación completo | 13961000 | 1 7 |
| 3 | hose | flexible | flexible | 97161001 | 1 99 |
| 4 | elbow | coude de raccordement flexible | rácor conexión flexo | 28071xx0 | 1 9 |
| 5 | check valve (2 pieces) | clapet anti-retour (2 pièces) | válvula antirretorno (2 pieza) | 94074000 | set 3 |
| 6 | flange | rosace | florón | 97159xx0 | 1 10 |
| 7 | hose | flexible | flexible | 94174000 | 1 11 |
| | | | | | |
| | | | | | |
| | | | | | |
| | | | | | |
| | | | | | |
| | | | | | |
| | | | | | |
| | | | | | |
| | | | | | |
| | | | | | |
| | | | | | |
| | | | | | |
| | | | | | |
| | | | | | |

hansgrohe

xx = Please see page 9.1 for finish codes / *PG is for Chrome only. See the index for other finishes.
 xx = Description des codes couleur page 9.1 / *PG concerne Chromé seulement. Pour les autres, voir dans la liste des références.
 xx = Para el código de acabados ver página 9.1 / *La PG vale para Cromado solo. Ver el índice para las otras superficies.